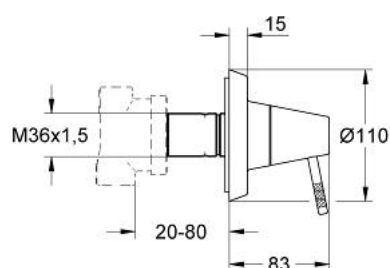


## 19 212 BK0 GROHE F1 5-WAY DIVERTER

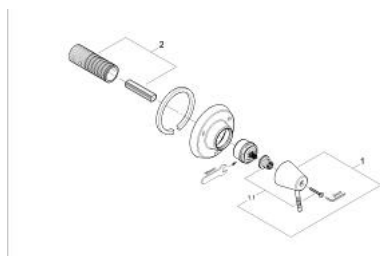


### PRODUCT DESCRIPTION

- with adjusting lever handle
- set for final installation (for 29 708)
- without concealed body
- escutcheon with wall sealing
- installation depth infinitely adjustable 20-80 mm
- level regulation for handle gap setting



## 19 212 BK0 **GROHE F1 5-WAY DIVERTER**



**SPARE PARTS**, September 2002 – now

1: Handle (Order-nr. 45005BK0)

1.1: Replacement handle connection kit (Order-nr. 45011000)

2: Extension (Order-nr. 45439000)