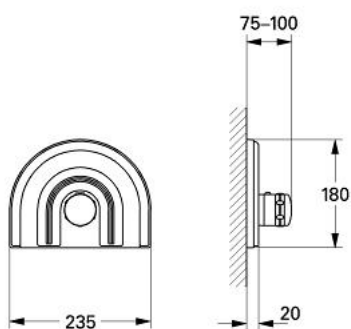


19 610 LG0 CHIARA THERMOSTAT MIXER

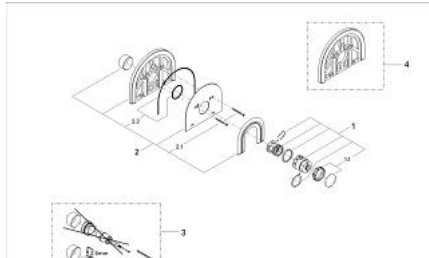


PRODUCT DESCRIPTION

- set for final installation for 34 303/34 305
- without concealed body
- with escutcheon
- temperature scale handle with GROHE SafeStop at 38°C
- individually limitable maximum temperature
- escutcheon- and shaft-sealings
- covered screws
- GROHE Long-Life finish



19 610 LG0 CHIARA THERMOSTAT MIXER



SPARE PARTS, January 1991 – now

1: Temperature scale handle (Order-nr. 47451LG0)

1.1: Cover cap (Order-nr. 47452LG0)

2: Escutcheon 181 x 235 mm (Order-nr. 47459LG0)

2.1: Screws (Order-nr. 47460000)

2.2: Seal kit (Order-nr. 47470000)

3: Extension set 27.5 mm (Order-nr. 47461000)*

4: Compensation frame, 12 mm (Order-nr. 47462L00)*

*Special accessories