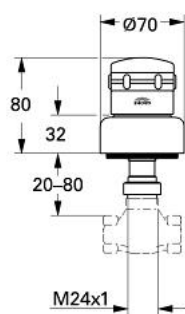


19 823 AG0 CHIARA CONCEALED VALVE EXPOSED PART

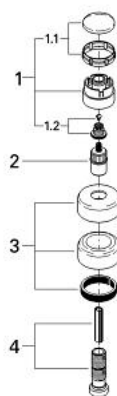


PRODUCT DESCRIPTION

- Colour: aranja/gold
- for GROHE concealed valves, 1/2", 3/4", 1"
- installation depth infinitely adjustable 20-80 mm
- escutcheon with wall sealing
- screwable
- marking: neutral
- GROHE Long-Life finish



19 823 AG0 CHIARA CONCEALED VALVE EXPOSED PART



SPARE PARTS, January 1991 – now

- 1: Handle (Chiara) 1/2", neutral (Order-nr. 45493CC0)
- 1.1: Cover cap (Order-nr. 47452CG0)
- 1.2: Replacement handle connection kit (Order-nr. 45186000)
 - 1.2.1: O-ring Ø 18.2 x Ø 1.7 (Order-nr. 0392400M)
- 1.3: Support ring (Order-nr. 03070000)
- 2: Extension for spindle (Order-nr. 45204000)
- 3: Escutcheon (Order-nr. 45339A00)
- 4: Extension set, 80 mm (Order-nr. 45202000)