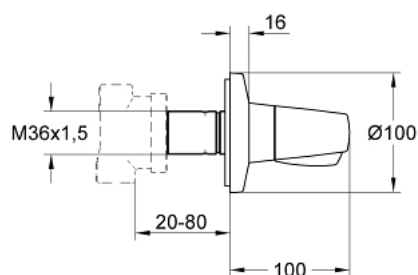


## 19 909 000 **CHIARA 5-WAY DIVERTER**

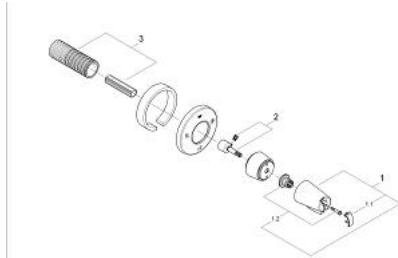


### PRODUCT DESCRIPTION

- Colour: chrome
- set for final installation (for 29 708)
- without concealed body
- escutcheon with screwable wall sealing
- installation depth infinitely adjustable 20-80 mm
- with handle
- GROHE Long-Life finish



## 19 909 000 **CHIARA 5-WAY DIVERTER**



### **SPARE PARTS**, January 2002 – now

- 1: Handle (Chiara) 1/2", neutral (Order-nr. 45954IP0)
- 1.1: Cover cap (Order-nr. 11366P0M)
- 1.2: Replacement handle connection kit (Order-nr. 45186000)
  - 1.2.1: O-ring Ø 18.2 x Ø 1.7 (Order-nr. 0392400M)
- 2: Extension for spindle (Order-nr. 45611000)
- 3: Extension (Order-nr. 45439000)