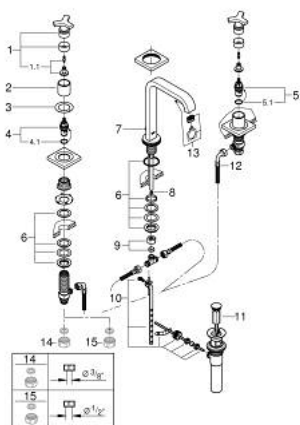


20 148 000 ALLURE THREE-HOLE BASIN MIXER 1/2" M-SIZE

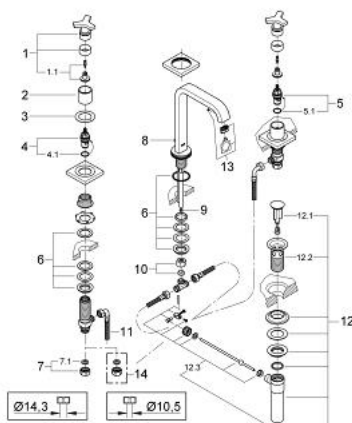


SPARE PARTS, March 2016 – now

- 1: Handle (Order-nr. 46611000)
- 1.1: Replacement handle connection kit (Order-nr. 45605000)
- 2: Sleeve (Order-nr. 08124000)
- 3: Sealing washer (Order-nr. 48047000)
- 4: Ceramic headpart 1/2" (Order-nr. 45882000)
- 4.1: O-ring Ø 18.2 x Ø 1.7 (Order-nr. 0392400M)
- 5: Ceramic headpart 1/2" (Order-nr. 45883000)
- 5.1: O-ring Ø 18.2 x Ø 1.7 (Order-nr. 0392400M)
- 6: Counter screws M28 x 1.5 (Order-nr. 45025000)
- 7: Pop-up rod (Order-nr. 65196000)
- 8: Flow limiter (Order-nr. 46324000)
- 9: Compression union 3/8" (Order-nr. 12914000)
- 10: Ball rod (Order-nr. 48332000)
- 11: Plug (Order-nr. 48331000)
- 12: Flexible connection hose (Order-nr. 45704000)
- 13: Mousseur (Order-nr. 13220000)
- 14: Coupling nut 1/2" (Order-nr. 1290100M)*
- 15: Coupling nut 1/2" x 14.5 mm (Order-nr. 1290200M)*

*Special accessories

20 148 000 ALLURE THREE-HOLE BASIN MIXER 1/2" M-SIZE

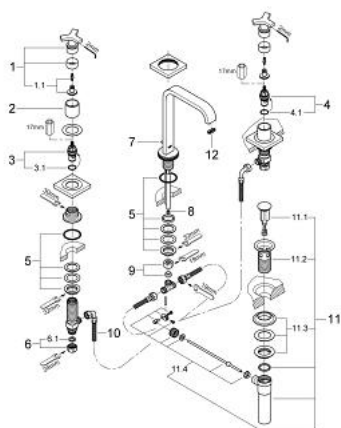


SPARE PARTS, August 2008 – March 2016

- 1: Handle (Order-nr. 46611000)
- 1.1: Replacement handle connection kit (Order-nr. 45605000)
- 2: Sleeve (Order-nr. 08124000)
- 3: Sealing washer (Order-nr. 48047000)
- 4: Ceramic headpart 1/2" (Order-nr. 45882000)
- 4.1: O-ring Ø 18.2 x Ø 1.7 (Order-nr. 0392400M)
- 5: Ceramic headpart 1/2" (Order-nr. 45883000)
- 5.1: O-ring Ø 18.2 x Ø 1.7 (Order-nr. 0392400M)
- 6: Counter screws M28 x 1.5 (Order-nr. 45025000)
- 7: Coupling nut 1/2" x 14.5 mm (Order-nr. 1290200M)
- 7.1: Fibre seal Ø 18,5 x Ø 12 x 2 (Order-nr. 0138900M)
- 8: Pop-up rod (Order-nr. 65196000)
- 9: Flow limiter (Order-nr. 46324000)
- 10: Compression union 3/8" (Order-nr. 12914000)
- 11: Flexible connection hose (Order-nr. 45704000)
- 12: Waste fitting (Order-nr. 28957000)
- 12.1: Plug (Order-nr. 45324000)
- 12.2: Housing (Order-nr. 01153000)
- 12.3: Ball rod (Order-nr. 45264000)
- 13: Mousseur (Order-nr. 13220000)
- 14: Coupling nut 1/2" (Order-nr. 1290100M)*

*Special accessories

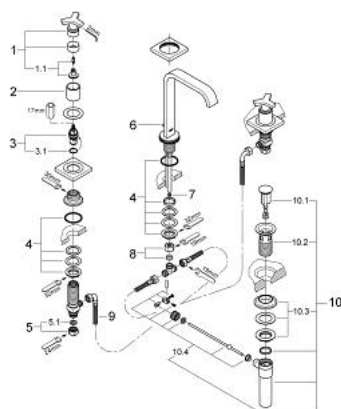
20 148 000 ALLURE THREE-HOLE BASIN MIXER 1/2" M-SIZE



SPARE PARTS, May 2008 – August 2008

- 1: Handle (Order-nr. 46611000)
- 1.1: Replacement handle connection kit (Order-nr. 45605000)
- 2: Sleeve (Order-nr. 08124000)
- 3: Ceramic headpart 1/2" (Order-nr. 45882000)
- 3.1: O-ring Ø 18.2 x Ø 1.7 (Order-nr. 0392400M)
- 4: Ceramic headpart 1/2" (Order-nr. 45883000)
- 4.1: O-ring Ø 18.2 x Ø 1.7 (Order-nr. 0392400M)
- 5: Counter screws M28 x 1.5 (Order-nr. 45025000)
- 6: Coupling nut 1/2" x 14.5 mm (Order-nr. 1290200M)
- 6.1: Fibre seal Ø 18,5 x Ø 12 x 2 (Order-nr. 0138900M)
- 7: Pop-up rod (Order-nr. 65196000)
- 8: Flow limiter (Order-nr. 45303000)
- 9: Compression union 3/8" (Order-nr. 12914000)
- 10: Flexible connection hose (Order-nr. 45704000)
- 11: Waste fitting (Order-nr. 28957000)
- 11.1: Plug (Order-nr. 45324000)
- 11.2: Housing (Order-nr. 01153000)
- 11.3: Ball rod (Order-nr. 45264000)
- 12: Dirt strainer (Order-nr. 46625XD0)

20 148 000 ALLURE THREE-HOLE BASIN MIXER 1/2" M-SIZE



SPARE PARTS, August 2007 – May 2008

- 1: Handle (Order-nr. 46611000)
- 1.1: Replacement handle connection kit (Order-nr. 45605000)
- 2: Sleeve (Order-nr. 08124000)
- 3: Ceramic headpart 1/2" (Order-nr. 45346000)
- 3.1: O-ring Ø 18.2 x Ø 1.7 (Order-nr. 0392400M)
- 4: Counter screws M28 x 1.5 (Order-nr. 45025000)
- 5: Coupling nut 1/2" x 14.5 mm (Order-nr. 1290200M)
- 5.1: Fibre seal Ø 18,5 x Ø 12 x 2 (Order-nr. 0138900M)
- 6: Pop-up rod (Order-nr. 65196000)
- 7: Flow limiter (Order-nr. 45303000)
- 8: Compression union 3/8" (Order-nr. 12914000)
- 9: Flexible connection hose (Order-nr. 45704000)
- 10: Waste fitting (Order-nr. 28957000)
- 10.1: Plug (Order-nr. 45324000)
- 10.2: Housing (Order-nr. 01153000)
- 10.3: Ball rod (Order-nr. 45264000)
- 11: Dirt strainer (Order-nr. 46625XD0)