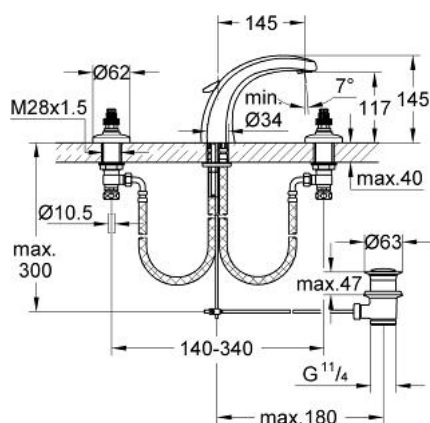


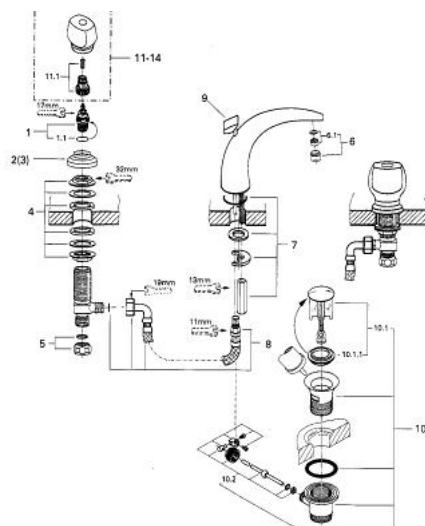
20 613 IG0 **FLORIDA THREE-HOLE BASIN MIXER 1/2"**



PRODUCT DESCRIPTION

- Colour: chrome/gold
- Carbodur ceramic headparts 1/2", 180°
- non swivel spout with mousseur
- pressure-proof, flexible connection hoses
- pressure-proof, flexible connection hoses between middle-body and side valves
- union nut with 10.5 mm drilling
- pop-up waste set 1 1/4"
- without handles
- for handles, see product no.18 956/18 996/18 997
- 18 993
- GROHE Long-Life finish

20 613 IG0 FLORIDA THREE-HOLE BASIN MIXER 1/2"



SPARE PARTS, January 1989 – now

- 1: Ceramic headpart 1/2" (Order-nr. 45346000)
- 1.1: O-ring Ø 18.2 x Ø 1.7 (Order-nr. 0392400M)
- 2: Flange Ø 62 (Order-nr. 45223000)
- 3: Flange Ø 52 (Order-nr. 45224000)
- 4: Counter screws M28 x 1.5 (Order-nr. 45025000)
- 5: Coupling nut 1/2" (Order-nr. 1290100M)
- 5.1: Fibre seal Ø 18,5 x Ø 12 x 2 (Order-nr. 0138900M)
- 6: Mousseur (Order-nr. 13929G00)
- 6.1: Replacement flow control M22x1 and M24x1 (Order-nr. 45002000)
- 7: Shank mounting kit (Order-nr. 45226000)
- 8: Flexible hose (Order-nr. 45461000)
- 9: Pop-up rod (Order-nr. 45177IG0)
- 10: Waste set 1 1/4" (Order-nr. 28910IG0)
- 10.1: Plug (Order-nr. 07182G00)
- 10.2: Eccentric rod (Order-nr. 07052000)
- 11: Replacement handle connection kit (Order-nr. 45186000)
- 11.1: O-ring Ø 18.2 x Ø 1.7 (Order-nr. 0392400M)
- 12: Handle (Order-nr. 45180000)*
- 13: Florida handle 115 (Order-nr. 45230IG0)*
- 14: Florida handle (500) (Order-nr. 45206IG0)*
- 15: Dorina handle (510) (Order-nr. 45207000)*

*Special accessories