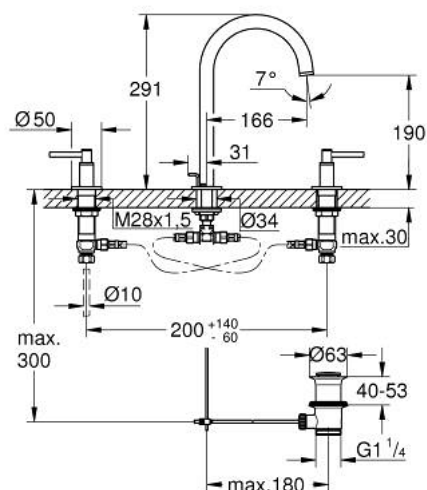


20 649 GL0 ATRIO THREE-HOLE BASIN MIXER 1/2" L-SIZE

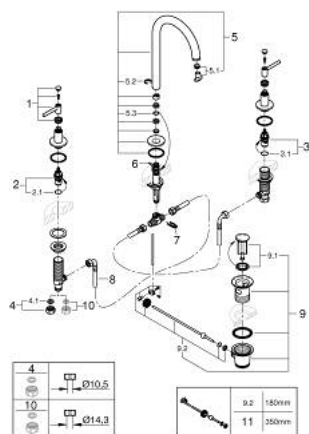


PRODUCT DESCRIPTION

- Colour: cool sunrise
- ceramic headparts 1/2", 90°
- GROHE Long-Life finish
- GROHE Water Saving - Less water, perfect flow
- maximum flow rate (at 3 bar): 5 l/min
- swivel tubular spout with mousseur and stop limiter
- adjustable swivel area 0° / 150° / 360°
- pop-up waste set 1 1/4"
- flexible connection hoses between spout and side valves
- with lever handles
- Two different sets of caps included. One set with "H" and "C" marking, one set without marking.



20 649 GL0 ATRIO THREE-HOLE BASIN MIXER 1/2" L-SIZE



SPARE PARTS, October 2021 – now

- 1: Lever handles (Order-nr. 14216GL0)
- 2: Ceramic headpart 1/2" (Order-nr. 45882000)
- 2.1: O-ring Ø 18.2 x Ø 1.7 (Order-nr. 0392400M)
- 3: Ceramic headpart 1/2" (Order-nr. 45883000)
- 3.1: O-ring Ø 18.2 x Ø 1.7 (Order-nr. 0392400M)
- 4: Coupling nut 1/2" (Order-nr. 1290100M)
- 4.1: Fibre seal Ø 18,5 x Ø 12 x 2 (Order-nr. 0138900M)
- 5: Spout (Order-nr. 101298GL00)
- 5.1: Laminar flow straightener (Order-nr. 48408000)
- 5.2: Safety ring (Order-nr. 4826600M)
- 5.3: Sealing washer (Order-nr. 0128500M)
- 6: Pop-up rod (Order-nr. 65196GL0)
- 7: Fixing clamp (Order-nr. 6554100M)
- 8: Flexible connection hose (Order-nr. 45704000)
- 9: Waste set 1 1/4" (Order-nr. 28910GL0)
- 9.1: Plug (Order-nr. 07182GL0)
- 9.2: Eccentric rod (Order-nr. 07052000)
- 10: Coupling nut 1/2" x 14.5 mm (Order-nr. 1290200M)*
- 11: Eccentric rod (Order-nr. 07341000)*

*Special accessories