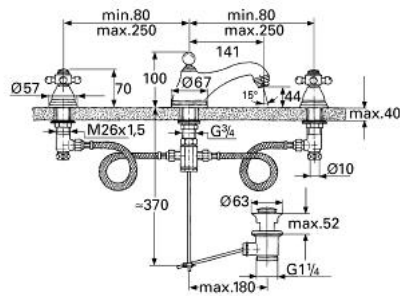


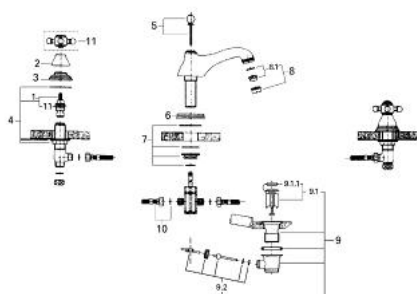
20 651 000 SINFONIA THREE-HOLE BASIN MIXER 1/2"



PRODUCT DESCRIPTION

- Colour: chrome
- Carbodur ceramic headparts 1/2", 180°
- non swivel spout with mousseur
- projection 140 mm
- pressure-proof, flexible connection hoses
- union nut with 10.5 mm drilling
- pop-up waste set 1 1/4"
- without handles
- GROHE Long-Life finish

20 651 000 **SINFONIA THREE-HOLE BASIN MIXER 1/2"**



SPARE PARTS, January 1992 – now

- 1: Ceramic headpart 1/2" (Order-nr. 45346000)
- 1.1: O-ring Ø 18.2 x Ø 1.7 (Order-nr. 0392400M)
- 2: Cap (Order-nr. 45700000)
- 3: Escutcheon (Order-nr. 45692000)
- 4: Shank mounting kit (Order-nr. 07660000)
- 5: Pop-up rod (Order-nr. 07511000)
- 6: Escutcheon (Order-nr. 45802000)
- 7: Shank mounting kit (Order-nr. 45703000)
- 8: Mousseur (Order-nr. 13929000)
- 8.1: Replacement flow control M22x1 and M24x1 (Order-nr. 45002000)
- 9: Waste set 1 1/4" (Order-nr. 28910000)
- 9.1: Plug (Order-nr. 07182000)
- 9.2: Eccentric rod (Order-nr. 07052000)
- 10: Flexible connection hose (Order-nr. 45704000)
- 11: Cross handle (Order-nr. 45600000)*

*Special accessories