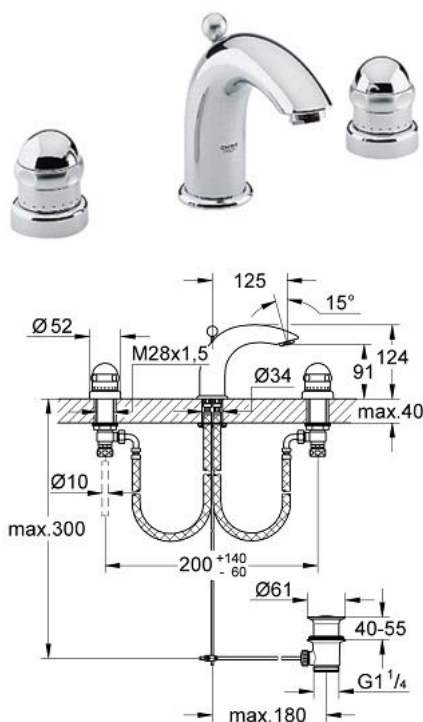


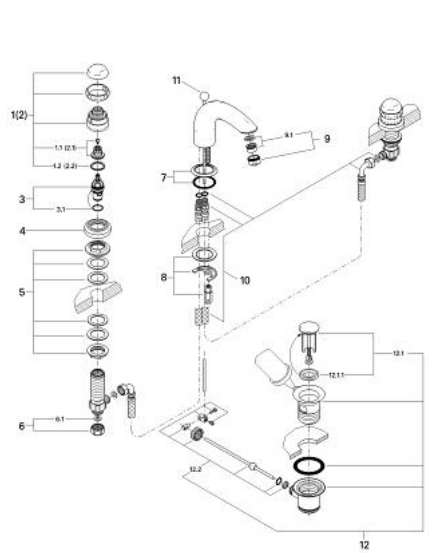
20 893 000 **SENTOSA THREE-HOLE BASIN MIXER 1/2"**



PRODUCT DESCRIPTION

- Colour: chrome
- Carbidur ceramic headparts 1/2", 180°
- non swivel spout with mousseur
- pressure-proof, flexible connection hoses
- pressure-proof, flexible connection hoses between middle-body and side valves
- union nut with 10.5 mm drilling
- pop-up waste set 1 1/4"
- GROHE Long-Life finish

20 893 000 **SENTOSA THREE-HOLE BASIN MIXER 1/2"**



SPARE PARTS, January 1994 – now

- 1: Handle 1/2" (Sentosa) (Order-nr. 45538IP0)
- 1.1: Replacement handle connection kit (Order-nr. 45186000)
- 1.1.1: O-ring Ø 18.2 x Ø 1.7 (Order-nr. 0392400M)
- 1.2: Guide ring (Order-nr. 0202100M)
- 2: Handle 1/2", red (Sentosa) (Order-nr. 45539IP0)
- 2.1: Replacement handle connection kit (Order-nr. 45186000)
- 2.2: Guide ring (Order-nr. 0202100M)
- 3: Ceramic headpart 1/2" (Order-nr. 45346000)
- 3.1: O-ring Ø 18.2 x Ø 1.7 (Order-nr. 0392400M)
- 4: Escutcheon (Order-nr. 04698000)
- 5: Counter screws M28 x 1.5 (Order-nr. 45025000)
- 6: Coupling nut 1/2" (Order-nr. 1290100M)
- 6.1: Fibre seal Ø 18,5 x Ø 12 x 2 (Order-nr. 0138900M)
- 7: Escutcheon (Order-nr. 04696000)
- 8: Shank mounting kit (Order-nr. 45226000)
- 9: Mousseur (Order-nr. 13929000)
- 9.1: Replacement flow control M22x1 and M24x1 (Order-nr. 45002000)
- 10: Flexible hose (Order-nr. 45461000)
- 11: Pop-up rod (Order-nr. 07511000)
- 12: Waste set 1 1/4" (Order-nr. 28910000)
- 12.1: Plug (Order-nr. 07182000)
- 12.2: Eccentric rod (Order-nr. 07052000)