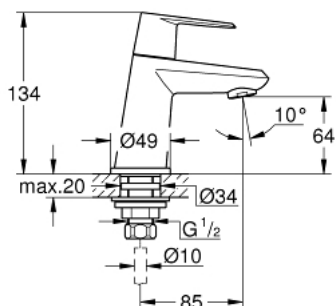


23 051 002 EURODISC COSMOPOLITAN PILLAR TAP XS-SIZE



PRODUCT DESCRIPTION

- Colour: chrome
- single hole installation
- metal lever
- ceramic headpart 1/2", 90°
- GROHE Long-Life finish
- GROHE Water Saving - Less water, perfect flow
- maximum flow rate (at 3 bar): 5 l/min
- SpeedClean mousseur
- union nut 1/2" x 10.5 mm
- min. recommended pressure 1.0 bar
- noise classification I in accordance with DIN 4109



23 051 002 EURODISC COSMOPOLITAN PILLAR TAP XS-SIZE



SPARE PARTS, March 2016 – now

- 1: Handle (Order-nr. 48060000)
- 1.1: Replacement handle connection kit (Order-nr. 45186000)
 - 1.1.1: O-ring Ø 18.2 x Ø 1.7 (Order-nr. 0392400M)
- 2: Ceramic headpart 1/2" (Order-nr. 45882000)
 - 2.1: O-ring Ø 18.2 x Ø 1.7 (Order-nr. 0392400M)
- 3: Mousseur (Order-nr. 48159000)
- 4: Shank fastening assembly 1/2" (Order-nr. 45000000)
- 5: Coupling nut 1/2" (Order-nr. 1290100M)
- 5.1: Fibre seal Ø 18,5 x Ø 12 x 2 (Order-nr. 0138900M)
- 6: Coupling nut 1/2" x 14.5 mm (Order-nr. 1290200M)*

*Special accessories