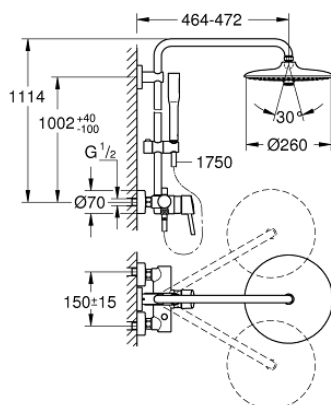


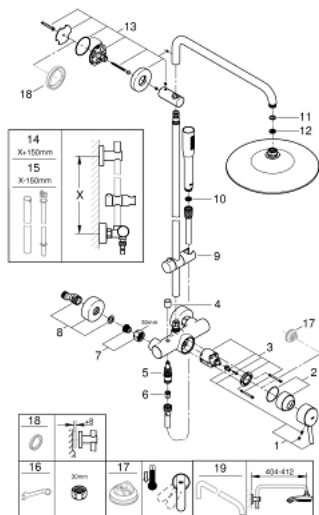
23 061 003 EUPHORIA SYSTEM 260 SHOWER SYSTEM WITH SINGLE LEVER MIXER FOR WALL MOUNTING



PRODUCT DESCRIPTION

- Colour: chrome
- consisting of:
 - horizontal swivable 450 mm shower arm
 - exposed single-lever shower mixer with diverter
 - allows change between:
 - head shower Euphoria 260 (26 457)
 - 3 spray patterns:
 - Rain, SmartRain, Jet
 - maximum flow rate (at 3 bar): 8.5 l/min
 - with ball joint
 - rotation angle $\pm 15^\circ$
 - hand shower Euphoria Cosmopolitan Stick (27 400)
 - spray pattern:
 - Rain
 - maximum flow rate (at 3 bar): 8.5 l/min
 - adjustable in height with gliding element
 - Silverflex shower hose 1750 mm 1/2" x 1/2" (28 388)
 - GROHE SilkMove 46 mm ceramic cartridge
 - GROHE DreamSpray perfect spray pattern
 - GROHE Long-Life finish
 - GROHE Water Saving - Less water, perfect flow
 - GROHE FastFixation upper bracket adjustable
 - Inner WaterGuide for a longer life
 - SpeedClean anti-limescale system
 - TwistStop to prevent hose from twisting
 - suitable for instantaneous heaters from 18 kW/h
 - minimum flow rate 7 l/min
 - min. recommended pressure 1.0 bar
 - professional edition

23 061 003 EUPHORIA SYSTEM 260 SHOWER SYSTEM WITH SINGLE LEVER MIXER FOR WALL MOUNTING



SPARE PARTS, January 2020 – now

- 1: Lever (Order-nr. 46723000)
- 2: Cap (Order-nr. 46025000)
- 3: Cartridge (Order-nr. 46048000)
- 4: Diverter knob (Order-nr. 64309000)
- 5: Diverter (Order-nr. 65655000)
- 6: Non-return valve (Order-nr. 08565000)
- 7: Screw connection 1/2" (Order-nr. 45044000)
- 7.1: Seal Ø 15 x Ø 2 (Order-nr. 0311900M)
- 8: S-union (Order-nr. 12662000)
- 9: Glide element (Order-nr. 12140000)
- 10: Dirt strainer (Order-nr. 0700200M)
- 11: Fibre seal Ø 18,5 x Ø 12 x 2 (Order-nr. 0138900M)
- 12: Dirt strainer (Order-nr. 48007000)
- 13: Shower rail holder (Order-nr. 48279000)
- 14: Shower system pipe for retrofitting (Order-nr. 48514000)*
- 15: Shower system pipe for retrofitting (Order-nr. 48515000)*
- 16: Special spanner (Order-nr. 19377000)*
- 17: Temperature limiter (Order-nr. 46375000)*
- 18: Shower system pipe for retrofitting (Order-nr. 48054000)*
- 19: Shower arm for shower systems (Order-nr. 14047000)*

*Special accessories