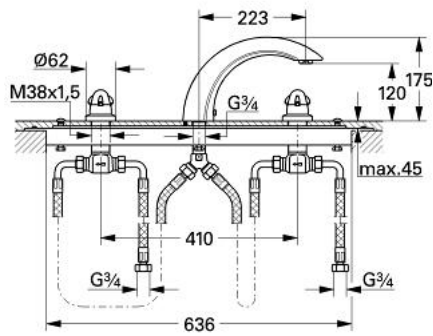


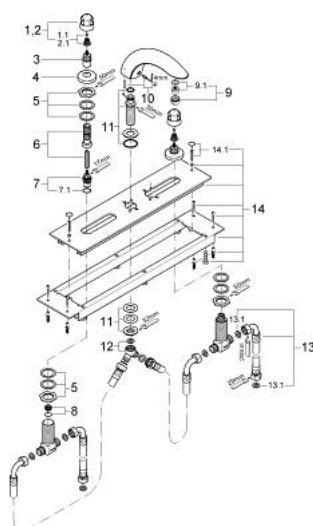
25 028 000 TALIA THREE-HOLE BATH COMBINATION



PRODUCT DESCRIPTION

- Colour: chrome
- bath inlet with mousseur
- 2 concealed valves with ceramic headparts 180° 3/4"
- mounting plate and base frame
- connection hoses 600 mm 3/4" x 3/4"
- GROHE Long-Life finish

25 028 000 TALIA THREE-HOLE BATH COMBINATION



SPARE PARTS, January 2001 – now

- 1: Handle (Order-nr. 45356IP0)
- 1.1: Replacement handle connection kit (Order-nr. 45186000)
- 1.1.1: O-ring Ø 18.2 x Ø 1.7 (Order-nr. 0392400M)
- 2: Handle (Order-nr. 45357IP0)
- 2.1: Replacement handle connection kit (Order-nr. 45186000)
- 3: Extension for spindle (Order-nr. 45204000)
- 4: Escutcheon (Order-nr. 05042000)
- 5: Replacement kit for shank fastening (Order-nr. 45444000)
- 6: Extension set, 80 mm (Order-nr. 45202000)
- 7: Ceramic headpart 3/4" (Order-nr. 45888000)
- 7.1: O-ring Ø 23 x Ø 2 (Order-nr. 45583000)
- 8: Valve seat 3/4" (Order-nr. 45345000)
- 9: Sistra (Order-nr. 13907000)
- 9.1: Replacement kit for Sistra M28 x 1 (Order-nr. 45047000)
- 10: Replace kit for spout fastening (Order-nr. 45833000)
- 11: Replacement kit for shank fastening (Order-nr. 45163000)
- 12: Adapter (Order-nr. 45358000)
- 13: Flexible hose (Order-nr. 45446000)
- 13.1: Seal (Order-nr. 0138600M)
- 14: Mounting frame (Order-nr. 45051000)
- 14.1: Fixing set (Order-nr. 45172000)