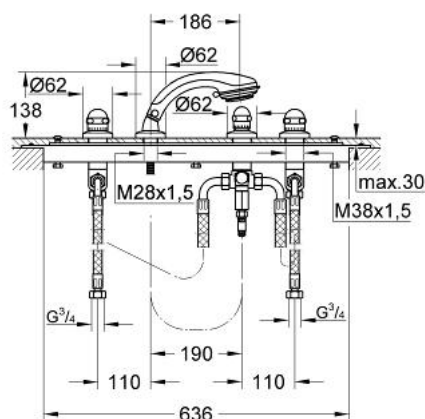


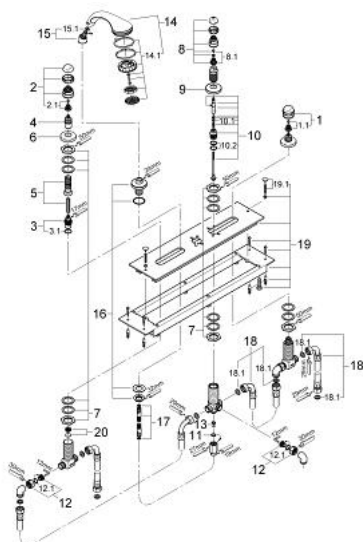
## 25 558 000 SENTOSA FOUR-HOLE BATH COMBINATION 3/4"



### PRODUCT DESCRIPTION

- Colour: chrome
- for combination with Talentofill
- inlet-, pop-up- and waste system
- 2 concealed valves with ceramic headparts 180° 3/4"
- automatic diverter:
- Talentofill inlet/hand shower
- mounting plate and base frame
- Relexa plus hand shower with Champagne spray
- metal shower hose
- connection hoses 600 mm 3/4" x 3/4"
- GROHE Long-Life finish

## 25 558 000 SENTOSA FOUR-HOLE BATH COMBINATION 3/4"



### SPARE PARTS, January 2002 – now

- 1: Handle 1/2" (Sentosa) (Order-nr. 45538IP0)
- 1.1: Replacement handle connection kit (Order-nr. 45186000)
- 1.1.1: O-ring Ø 18.2 x Ø 1.7 (Order-nr. 0392400M)
- 1.2: Guide ring (Order-nr. 0202100M)
- 2: Handle 1/2", red (Sentosa) (Order-nr. 45539IP0)
- 2.1: Replacement handle connection kit (Order-nr. 45186000)
- 2.2: Guide ring (Order-nr. 0202100M)
- 3: Ceramic headpart 3/4" (Order-nr. 45885000)
- 3.1: O-ring Ø 23 x Ø 2 (Order-nr. 45583000)
- 4: Extension for spindle (Order-nr. 45204000)
- 5: Extension set, 80 mm (Order-nr. 45202000)
- 6: Escutcheon (Order-nr. 05042000)
- 7: Replacement kit for shank fastening (Order-nr. 45444000)
- 8: Handle (Order-nr. 45897IP0)
- 8.1: Replacement handle connection kit (Order-nr. 45186000)
- 9: Escutcheon (Order-nr. 09088000)
- 10: Diverter (Order-nr. 45896000)
- 10.1: Sealing washer Ø 6 x Ø 2 (Order-nr. 0128300M)
- 10.2: Sealing washer (Order-nr. 0120500M)
- 11: Seal Ø 16 x 2 (Order-nr. 0140100M)
- 12: Screw connection 1/2" (Order-nr. 45044000)
- 12.1: Seal Ø 15 x Ø 2 (Order-nr. 0311900M)
- 13: Non-return valve (Order-nr. 08565000)
- 14: Hand shower 2 sprays (Order-nr. 28174000)
- 14.1: Coupling piece (Order-nr. 28635XX0)
- 14.2: Dirt strainer (Order-nr. 0700200M)
- 15: Coupling piece (Order-nr. 47318000)
- 15.1: Sealing washer Ø 11 x Ø 2 (Order-nr. 0122400M)
- 16: Spray holder (Order-nr. 45836IX0)
- 17: Metal shower hose (Order-nr. 28146000)
- 18: Flexible hose (Order-nr. 45446000)
- 18.1: Seal (Order-nr. 0138600M)
- 19: Mounting frame (Order-nr. 45051000)
- 19.1: Fixing set (Order-nr. 45172000)
- 20: Valve seat 3/4" (Order-nr. 45345000)