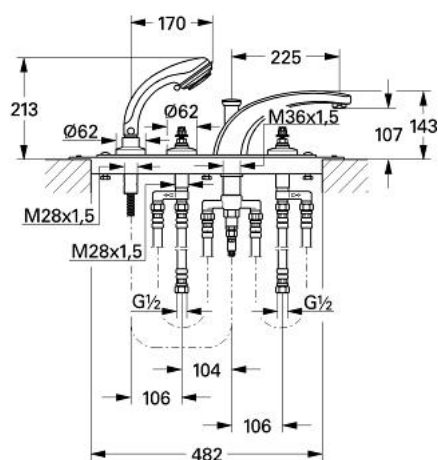


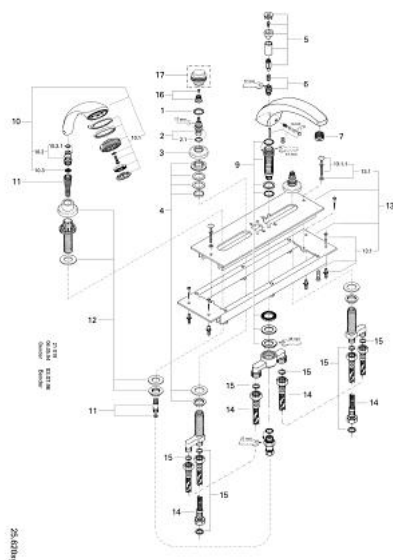
## 25 620 IG0 **FLORIDA FOUR-HOLE BATH COMBINATION 1/2"**



### PRODUCT DESCRIPTION

- Colour: chrome/gold
- bath inlet with automatic diverter
- mousseur (13 621)
- 2 stop valves with Carbodur ceramic headparts 1/2", 180°
- without handles (29 600)
- hose guide with Relaxa plus shower set (27 162) with Champagne spray
- mounting plate and base frame
- connection hoses 600 mm
- 1/2" x 1/2" (45 170)
- for handles, see product no. 18 956/18 996/18 997
- 18 993
- GROHE Long-Life finish

## 25 620 IG0 FLORIDA FOUR-HOLE BATH COMBINATION 1/2"



### SPARE PARTS, January 1993 – now

- 1: Guide ring (Order-nr. 0202100M)
- 2: Ceramic headpart 1/2" (Order-nr. 45346000)
- 2.1: O-ring Ø 18.2 x Ø 1.7 (Order-nr. 0392400M)
- 3: Flange Ø 62 (Order-nr. 45223000)
- 4: Counter screws M28 x 1.5 (Order-nr. 45025000)
- 5: Diverter knob (Order-nr. 452251G0)
- 6: Diverter (Order-nr. 45187000)
- 7: Mousseur (Order-nr. 13939G00)
- 8: Spout connection set (Order-nr. 45683000)
- 9: Shank (Order-nr. 45456000)
- 10: Hand shower 2 sprays (Order-nr. 28174IG0)
- 10.1: Spray faceplate (Order-nr. 45658IG0)
- 10.2: Coupling piece (Order-nr. 28635XX0)
- 10.3: Dirt strainer (Order-nr. 0700200M)
- 11: Metal shower hose (Order-nr. 28158G00)
- 12: Spray holder (Order-nr. 47417000)
- 13: Mounting frame (Order-nr. 45200000)
- 13.1: Fixing set (Order-nr. 07007000)
- 13.1.1: Fixing set (Order-nr. 45172000)
- 14: Connecting hose (Order-nr. 07227000)
- 15: Fibre seal Ø 18,5 x Ø 12 x 2 (Order-nr. 0138900M)
- 16: Replacement handle connection kit (Order-nr. 45186000)
- 16.1: O-ring Ø 18.2 x Ø 1.7 (Order-nr. 0392400M)
- 17: Handle (Order-nr. 45180000)\*
- 18: Florida handle 115 (Order-nr. 45230IG0)\*
- 19: Florida handle (500) (Order-nr. 45206IG0)\*
- 20: Dorina handle (510) (Order-nr. 45207000)\*

\*Special accessories