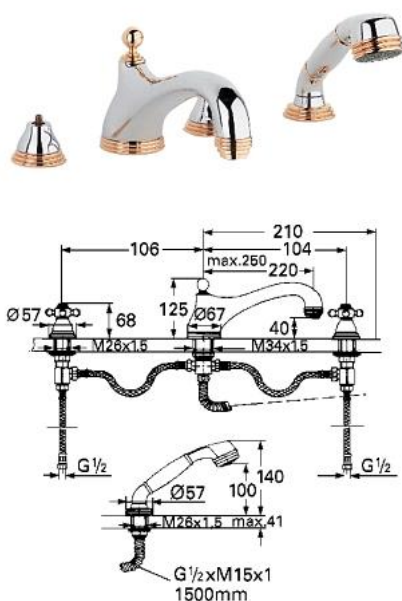
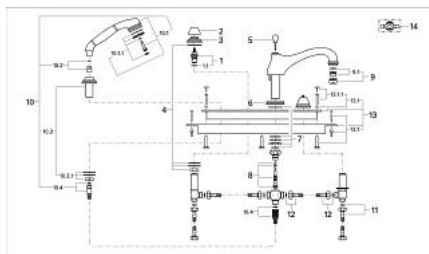


25 651 IG0 **SINFONIA FOUR-HOLE BATH COMBINATION 1/2"**

PRODUCT DESCRIPTION

- Colour: chrome/gold
- Carbodur ceramic headparts 1/2", 180°
- bath inlet with automatic diverter bath/shower
- projection 220 mm
- mousseur
- mounting plate and base frame
- hose guide with hand shower set
- pressure-proof, flexible connection hoses
- without handles
- GROHE Long-Life finish

25 651 IG0 SINFONIA FOUR-HOLE BATH COMBINATION 1/2"



SPARE PARTS, January 1992 – now

- 1: Ceramic headpart 1/2" (Order-nr. 45346000)
- 1.1: O-ring Ø 18.2 x Ø 1.7 (Order-nr. 0392400M)
- 2: Cap (Order-nr. 45700000)
- 3: Escutcheon (Order-nr. 45692G00)
- 4: Shank mounting kit (Order-nr. 07660000)
- 5: Pop-up rod head (Order-nr. 04425000)
- 6: Escutcheon (Order-nr. 45803G00)
- 7: Shank mounting kit (Order-nr. 45715000)
- 8: Diverter cone (Order-nr. 45714000)
- 9: Mousseur (Order-nr. 13927G00)
- 9.1: Replacement flow control M28x1 (Order-nr. 45029000)
- 10: Hand shower set, 1/2" (Order-nr. 27165IG0)
- 10.1: Hand shower (Order-nr. 28365IG0)
- 10.1.1: Spray face plate SpeedClean (Order-nr. 45792XX0)
- 10.2: Adapter (Order-nr. 45809000)
- 10.3: Spray holder (Order-nr. 45787IG0)
- 10.3.1: Shank mounting kit (Order-nr. 07660000)
- 10.4: Metal shower hose (Order-nr. 28158000)
- 11: Connecting hose (Order-nr. 07227000)
- 12: Flexible hose 1/2" x 1/2" x 600 (Order-nr. 45717000)
- 13: Mounting plate (Order-nr. 45341000)
- 13.1: Fixing set (Order-nr. 07007000)
- 13.1.1: Fixing set (Order-nr. 45172000)
- 14: Cross handle (Order-nr. 45600IG0)*

*Special accessories