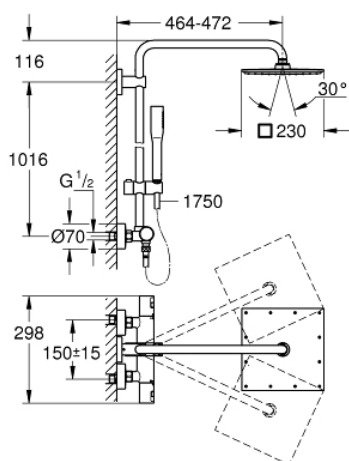


## 26 365 000 VITALIO JOY SYSTEM 230 SHOWER SYSTEM WITH THERMOSTAT FOR WALL MOUNTING

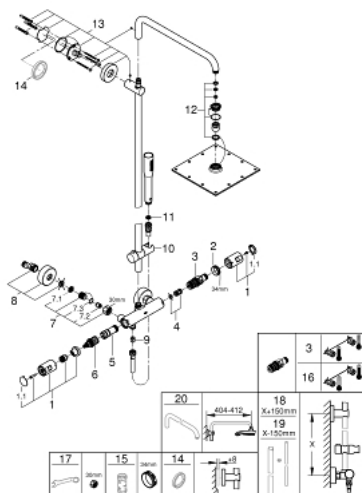


### PRODUCT DESCRIPTION

- Colour: chrome
- consisting of:
  - horizontal swivable 450 mm shower arm
  - exposed thermostat with Aquadimmer function
  - allows change between:
    - head shower 230 x 230 mm
    - material: metal
    - spray pattern: Rain
    - maximum flow rate (at 3 bar): 8 l/min
  - with ball joint
  - rotation angle  $\pm 15^\circ$
- hand shower Vitalio Get Stick (27 458)
  - maximum flow rate (at 3 bar): 7.5 l/min
- adjustable in height with gliding element
- shower hose VitalioFlex Silver 1.750 mm,  $\frac{1}{2}$ " x  $\frac{1}{2}$ " (27 506)
  - minimum flow rate 7 l/min
- GROHE DreamSpray perfect spray pattern
- GROHE Long-Life finish
- GROHE TurboStat compact cartridge with wax thermoelement
- GROHE SafeStop safety button at 38°C
- GROHE SafeStop Plus optional temperature limiter at 43°C included
- SpeedClean anti-limescale system
- Inner WaterGuide for a longer life
- TwistStop to prevent hose from twisting
- suitable for instantaneous heaters from 18 kW/h
- QuickSpanner included



## 26 365 000 VITALIO JOY SYSTEM 230 SHOWER SYSTEM WITH THERMOSTAT FOR WALL MOUNTING



### SPARE PARTS, July 2017 – now

- 1: Handle (Order-nr. 47728000)
  - 1.1: Cover cap (Order-nr. 6458500M)
  - 2: Fitting ring (Order-nr. 47743000)
  - 3: Thermostatic compact cartridge 1/2" (Order-nr. 47439000)
  - 4: Buffer (Order-nr. 47398000)
  - 5: Water flow (Order-nr. 47751000)
  - 6: Aquadimmer (Order-nr. 12433000)
  - 7: Non-return valve (Order-nr. 47189000)
  - 7.1: Dirt strainer (Order-nr. 0726400M)
  - 7.2: Non-return valve (Order-nr. 08565000)
  - 7.3: O-ring  $\varnothing 17 \times \varnothing 2$  (Order-nr. 0305500M)
  - 8: S-union (Order-nr. 12662000)
  - 9: Non-return valve (Order-nr. 08565000)
  - 10: Glide element (Order-nr. 12140000)
  - 11: Dirt strainer (Order-nr. 0700200M)
  - 12: Spare part set (Order-nr. 48471000)
  - 13: Shower rail holder (Order-nr. 48279000)
  - 14: Compensation disc (Order-nr. 27180000)\*
  - 15: Socket spanner (Order-nr. 19332000)\*
  - 16: GROHE TurboStat cartridge 1/2" (Order-nr. 47175000)\*
  - 17: Special spanner (Order-nr. 19377000)\*
  - 18: Shower system pipe for retrofitting (Order-nr. 48053000)\*
  - 19: Shower system pipe for retrofitting (Order-nr. 48054000)\*
  - 20: Shower arm for shower systems (Order-nr. 14047000)\*
- \*Special accessories