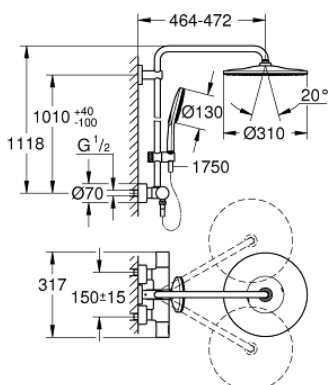


26 647 000 RAINSHOWER SMARTACTIVE 310 SHOWER SYSTEM WITH THERMOSTAT FOR WALL MOUNTING



PRODUCT DESCRIPTION

- Colour: chrome
- consisting of:
 - horizontal swivable 450 mm shower arm
 - exposed thermostat with Aquadimmer function
 - allows change between:
 - head shower Rainshower Mono 310
 - with ball joint
 - rotation angle $\pm 15^\circ$
 - Rainshower SmartActive 130 hand shower 3 sprays
 - adjustable in height with gliding element
 - including performance grip
- Silverflex shower hose 1750 mm
- GROHE TurboStat compact cartridge with wax thermoelement
- GROHE SafeStop safety button at 38°C
- GROHE SafeStop Plus optional temperature limiter at 43°C included
- GROHE CoolTouch no risk of scalding
- GROHE DreamSpray perfect spray pattern
- GROHE SmartTip showering spray selection via push of a ring
- GROHE Long-Life finish
- GROHE FastFixation upper bracket adjustable
- SpeedClean anti-limescale system
- suitable for instantaneous heaters from 18 kW/h
- minimum flow rate 7 l/min



26 647 000 RAINSHOWER SMARTACTIVE 310 SHOWER SYSTEM WITH THERMOSTAT FOR WALL MOUNTING



SPARE PARTS, August 2018 – March 2021

- 1: Aquadimmer handle (Order-nr. 47804000)
- 2: Stop (Order-nr. 47723000)
- 3: Aquadimmer (Order-nr. 47364000)
- 4: Water flow (Order-nr. 47887000)
- 5: Temperature scale handle (Order-nr. 47811000)
- 6: Fitting ring (Order-nr. 47743000)
- 7: Thermostatic compact cartridge 1/2" (Order-nr. 47439000)
- 8: Non-return valve (Order-nr. 47189000)
- 8.1: Dirt strainer (Order-nr. 0726400M)
- 8.2: Non-return valve (Order-nr. 08565000)
- 8.3: O-ring $\varnothing 17 \times \varnothing 2$ (Order-nr. 0305500M)
- 9: S-union (Order-nr. 12693000)
- 10: Non-return valve (Order-nr. 08565000)
- 11: Glide element (Order-nr. 48424000)
- 12: Dirt strainer (Order-nr. 0700200M)
- 13: Fibre seal $\varnothing 18,5 \times \varnothing 12 \times 2$ (Order-nr. 0138900M)
- 14: Dirt strainer (Order-nr. 48007000)
- 15: Shower rail holder (Order-nr. 48279000)
- 16: Compensation disc (Order-nr. 27180000)*
- 17: Socket spanner (Order-nr. 19332000)*
- 18: GROHE TurboStat cartridge 1/2" (Order-nr. 47175000)*
- 19: Special spanner (Order-nr. 19377000)*
- 20: Shower system pipe for retrofitting (Order-nr. 48053000)*
- 21: Shower system pipe for retrofitting (Order-nr. 48054000)*
- 22: Shower arm for shower systems (Order-nr. 14047000)*

*Special accessories