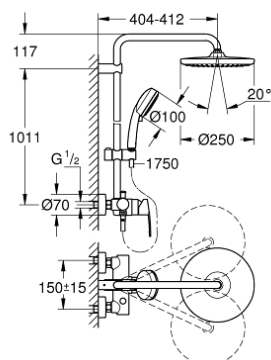


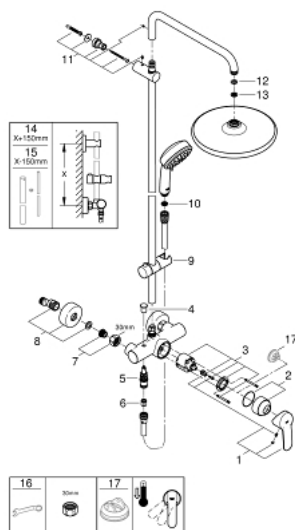
26 673 000 TEMPESTA COSMOPOLITAN SYSTEM 250 SHOWER SYSTEM WITH SINGLE LEVER MIXER FOR WALL MOUNTING



PRODUCT DESCRIPTION

- Colour: chrome
- consisting of:
 - horizontal swivable 390 mm shower arm
 - exposed single-lever shower mixer with diverter
 - allows change between:
 - head shower Tempesta 250
 - spray pattern:
 - Rain
 - head shower with white rear cover
 - with ball joint
 - rotation angle $\pm 10^\circ$
 - GROHE Water Saving 9.5 l/min flow limiter
 - hand shower Tempesta Cosmopolitan 100 (27 571)
 - 2 spray patterns:
 - Rain, Jet
 - GROHE Water Saving 5.7 l/min flow limiter
 - adjustable in height with gliding element
 - RotaFlex TwistStop shower hose 1750 mm 1/2" x 1/2" (28 410)
 - GROHE Water Saving - Less water, perfect flow
 - GROHE SilkMove 46 mm ceramic cartridge
 - GROHE DreamSpray perfect spray pattern
 - GROHE Long-Life finish
 - SpeedClean anti-limescale system
 - Inner WaterGuide for a longer life
 - TwistStop to prevent hose from twisting
 - suitable for instantaneous heaters from 18 kW/h
 - minimum flow rate 7 l/min
 - min. recommended pressure 1.0 bar
 - professional edition

26 673 000 TEMPESTA COSMOPOLITAN SYSTEM 250 SHOWER SYSTEM WITH SINGLE LEVER MIXER FOR WALL MOUNTING



SPARE PARTS, February 2019 – now

- 1: Lever (Order-nr. 46726000)
- 2: Cap (Order-nr. 46025000)
- 3: Cartridge (Order-nr. 46048000)
- 4: Diverter knob (Order-nr. 65648000)
- 5: Diverter (Order-nr. 65655000)
- 6: Non-return valve (Order-nr. 08565000)
- 7: Screw connection 1/2" (Order-nr. 45044000)
- 8: S-union (Order-nr. 12662000)
- 9: Glide element (Order-nr. 12140000)
- 10: Dirt strainer (Order-nr. 0700200M)
- 11: Shower rail holder (Order-nr. 48423000)
- 12: Fibre seal Ø 18,5 x Ø 12 x 2 (Order-nr. 0138900M)
- 13: Dirt strainer (Order-nr. 48007000)
- 14: Shower system pipe for retrofitting (Order-nr. 48053000)*
- 15: Shower system pipe for retrofitting (Order-nr. 48054000)*
- 16: Special spanner (Order-nr. 19377000)*
- 17: Temperature limiter (Order-nr. 46375000)*

*Special accessories