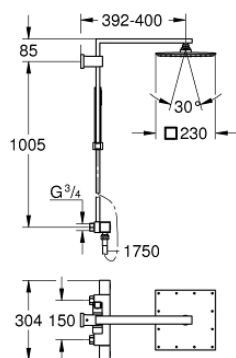


26 712 000 EUPHORIA CUBE SYSTEM 230 SHOWER SYSTEM WITH THERMOSTATIC MIXER FOR WALL MOUNTING

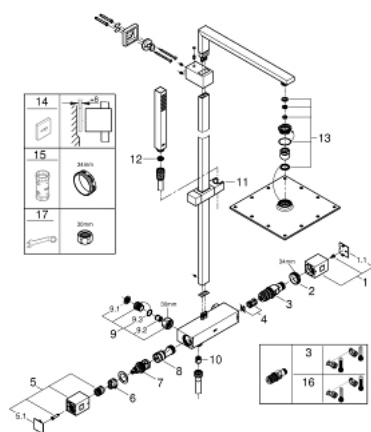


PRODUCT DESCRIPTION

- Colour: chrome
- consisting of:
- shower arm
- projection 400 mm
- exposed thermostat with Aquadimmer function
- allows change between:
- Rainshower head shower (27 479 000)
- spray pattern: Rain
- with ball joint
- rotation angle $\pm 15^\circ$
- hand shower Euphoria Cube (27 699)
- adjustable in height with gliding element
- Silverflex shower hose 1750 mm 1/2" x 1/2" (28 388)
- without connection unions
- GROHE Water Saving - Less water, perfect flow
- GROHE TurboStat compact cartridge with wax thermoelement
- GROHE SafeStop safety button at 38°C
- GROHE SafeStop Plus optional temperature limiter at 43°C included
- GROHE DreamSpray perfect spray pattern
- GROHE Long-Life finish
- SpeedClean anti-limescale system
- TwistStop to prevent hose from twisting



26 712 000 EUPHORIA CUBE SYSTEM 230 SHOWER SYSTEM WITH THERMOSTATIC MIXER FOR WALL MOUNTING



SPARE PARTS, March 2019 – now

- 1: Temperature control handle (Order-nr. 47958000)
- 1.1: Cover cap (Order-nr. 4795900M)
- 2: Fitting ring (Order-nr. 47743000)
- 3: Thermostatic compact cartridge 1/2" (Order-nr. 47439000)
- 4: Buffer (Order-nr. 47398000)
- 5: Shut-off handle (Order-nr. 47960000)
- 5.1: Cover cap (Order-nr. 4795900M)
- 6: Stop ring (Order-nr. 47965000)
- 7: Aquadimmer (Order-nr. 12433000)
- 8: Water flow (Order-nr. 47751000)
- 9: Non-return valve (Order-nr. 47189000)
- 9.1: Dirt strainer (Order-nr. 0726400M)
- 9.2: Non-return valve (Order-nr. 08565000)
- 9.3: O-ring $\varnothing 17 \times \varnothing 2$ (Order-nr. 0305500M)
- 10: Non-return valve (Order-nr. 08565000)
- 11: Glide element (Order-nr. 48180000)
- 12: Dirt strainer (Order-nr. 0700200M)
- 13: Spare part set (Order-nr. 45933000)
- 14: Compensation disc (Order-nr. 27933000)*
- 15: Socket spanner (Order-nr. 19332000)*
- 16: GROHE TurboStat cartridge 1/2" (Order-nr. 47175000)*
- 17: Special spanner (Order-nr. 19377000)*

*Special accessories