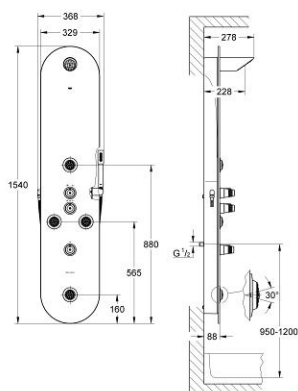


27 024 BK0 GROHE F1 SHOWER SYSTEM

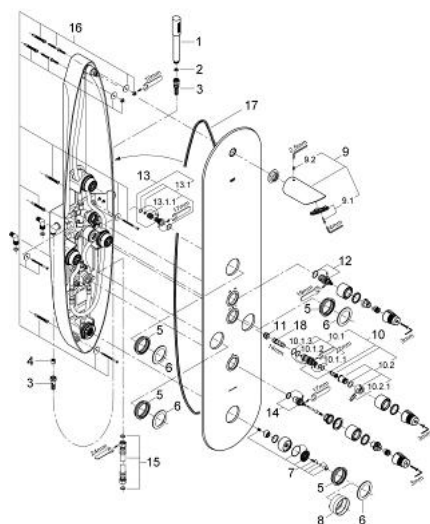


PRODUCT DESCRIPTION

- for wall mounting
- consisting of: fitting holder and solid glass panel
- glass
- opal glass
- printed on the reverse side
- showers:
 - 1 head shower with wide spray
 - 1 hand shower Sena with normal spray (28 034)
 - 4 adjustable side showers with adjustable spray directions and pre-adjustable flow rates
- all showers are equipped with SpeedClean
- fittings:
 - pre-mounted installation unit in frame
 - 1 thermostat 1/2"
 - 1 Aquadimmer for hand and head showers
 - 1 shut-off valve for side showers
- shower hose 1500 mm (28 417 000)
- flexible connection hoses
- min. recommended pressure 1.5 bar
- not suitable for instantaneous heater



27 024 BK0 GROHE F1 SHOWER SYSTEM



SPARE PARTS, May 2003 – now

- 1: Hand shower 1 spray (Order-nr. 28034BK0)
- 2: Dirt strainer (Order-nr. 0700200M)
- 3: Metal shower hose (Order-nr. 28417BK0)
- 4: Non-return valve (Order-nr. 08565000)
- 5: Fitting ring (Order-nr. 09537000)
- 6: Escutcheon (Order-nr. 09532000)
- 7: Spray faceplate (Order-nr. 45661BG0)
- 8: Installation tool (Order-nr. 09813000)
- 9: Head shower 1 spray (Order-nr. 28308BK0)
- 9.1: Spray faceplate (Order-nr. 45733BK0)
- 9.2: Thread pin (Order-nr. 0212500M)
- 10: Thermo-element 1/2" (Order-nr. 47217000)
- 10.1: Stop ring + regulating nut (Order-nr. 47300000)
- 10.1.1: Fixing clamp (Order-nr. 0574400M)
- 10.2: Sealing washer Ø 21 x Ø 2 (Order-nr. 0599900M)
- 10.3: Sealing washer Ø 24 x Ø 2 (Order-nr. 0119600M)
- 11: Seat for thermostat (Order-nr. 01460000)
- 12: Aquadimmer (Order-nr. 47364000)
- 13: Non-return valve 1/2" (Order-nr. 1411600M)
- 14: Ceramic headpart 3/4" (Order-nr. 45885000)
- 15: Connecting hose (Order-nr. 07227000)
- 16: Fixing set (Order-nr. 45732000)
- 17: Seal (Order-nr. 08351000)
- 18: Socket spanner (Order-nr. 19070000)*

*Special accessories