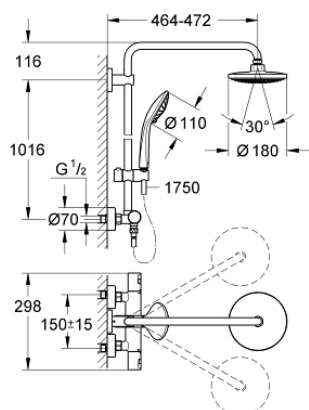


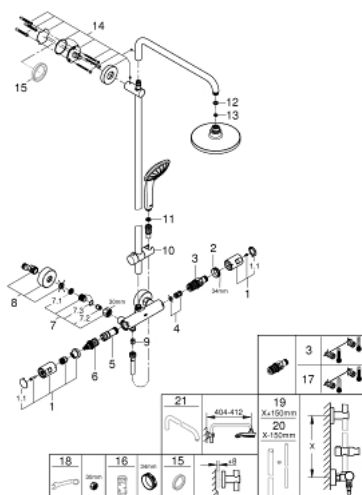
27 298 001 VITALIO JOY SYSTEM 180 SHOWER SYSTEM WITH THERMOSTAT FOR WALL MOUNTING



PRODUCT DESCRIPTION

- Colour: chrome
- consisting of:
 - horizontal swivable 450 mm shower arm
 - exposed thermostat Precision Joy with Aquadimmer function
 - allows change between:
 - head shower Vitalio Joy 180, chrome plated spray face, 9.5 l/min
 - spray pattern: Rain
 - maximum flow rate (at 3 bar): 15.5 l/min
 - with ball joint
 - rotation angle $\pm 15^\circ$
- hand shower Vitalio Joy 110 Massage (27 319)
 - 3 spray patterns:
 - Rain, SmartRain, Massage
 - maximum flow rate (at 3 bar): 11.5 l/min
 - GROHE SprayDimmer (stepless flow rate reduction)
 - adjustable in height with gliding element
- shower hose VitalioFlex Silver 1.750 mm, $\frac{1}{2}$ " x $\frac{1}{2}$ " (27 506)
 - minimum flow rate 7 l/min
 - GROHE Water Saving - Less water, perfect flow
 - GROHE DreamSpray perfect spray pattern
 - GROHE Long-Life finish
 - GROHE TurboStat compact cartridge with wax thermoelement
 - GROHE SafeStop safety button at 38°C
 - GROHE SafeStop Plus optional temperature limiter at 43°C included
- SpeedClean anti-limescale system
- Inner WaterGuide for a longer life
- TwistStop to prevent hose from twisting
- suitable for instantaneous heaters from 18 kW/h
- QuickSpanner included

27 298 001 VITALIO JOY SYSTEM 180 SHOWER SYSTEM WITH THERMOSTAT FOR WALL MOUNTING



SPARE PARTS, May 2016 – now

- 1: Handle (Order-nr. 47728000)
- 1.1: Cover cap (Order-nr. 6458500M)
- 2: Fitting ring (Order-nr. 47743000)
- 3: Thermostatic compact cartridge 1/2" (Order-nr. 47439000)
- 4: Buffer (Order-nr. 47398000)
- 5: Water flow (Order-nr. 47751000)
- 6: Aquadimmer (Order-nr. 12433000)
- 7: Non-return valve (Order-nr. 47189000)
- 7.1: Dirt strainer (Order-nr. 0726400M)
- 7.2: Non-return valve (Order-nr. 08565000)
- 7.3: O-ring $\varnothing 17 \times \varnothing 2$ (Order-nr. 0305500M)
- 8: S-union (Order-nr. 12662000)
- 9: Non-return valve (Order-nr. 08565000)
- 10: Glide element (Order-nr. 12140000)
- 11: Dirt strainer (Order-nr. 0700200M)
- 12: Fibre seal $\varnothing 18,5 \times \varnothing 12 \times 2$ (Order-nr. 0138900M)
- 13: Dirt strainer (Order-nr. 48007000)
- 14: Shower rail holder (Order-nr. 48279000)
- 15: Compensation disc (Order-nr. 27180000)*
- 16: Socket spanner (Order-nr. 19332000)*
- 17: GROHE TurboStat cartridge 1/2" (Order-nr. 47175000)*
- 18: Special spanner (Order-nr. 19377000)*
- 19: Shower system pipe for retrofitting (Order-nr. 48053000)*
- 20: Shower system pipe for retrofitting (Order-nr. 48054000)*
- 21: Shower arm for shower systems (Order-nr. 14047000)*

*Special accessories