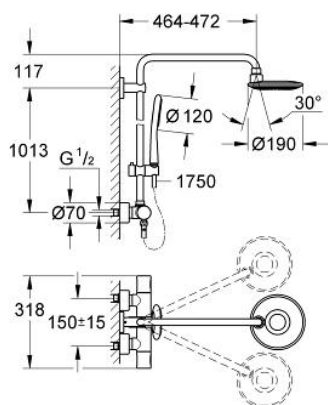


## 27 417 000 RAINSHOWER ICON SYSTEM 190 SHOWER SYSTEM WITH THERMOSTAT FOR WALL MOUNTING

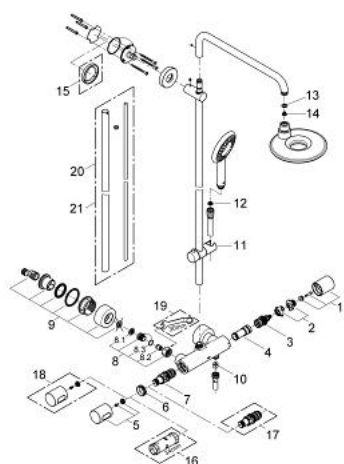


### PRODUCT DESCRIPTION

- Colour: chrome
- consisting of:
  - horizontal swivable 450 mm shower arm
  - exposed thermostat with Aquadimmer function
  - head shower Icon (27 373 000)
- allows change between:
  - with ball joint
  - rotation angle  $\pm 15^\circ$
- hand shower Icon 100 (27 377 000)
- adjustable in height with gliding element (12 140 000)
- 9.5 l/min. flow limiter
- Silverflex shower hose 1750 mm 1/2" x 1/2" (28 388)
- minimum flow rate 7 l/min
- GROHE Water Saving - Less water, perfect flow
- GROHE DreamSpray perfect spray pattern
- GROHE CoolTouch
- GROHE TurboStat compact cartridge with wax thermoelement
- GROHE Long-Life finish
- SpeedClean anti-limescale system
- Inner WaterGuide for a longer life
- suitable for instantaneous heaters from 18 kW/h



## 27 417 000 RAINSHOWER ICON SYSTEM 190 SHOWER SYSTEM WITH THERMOSTAT FOR WALL MOUNTING



### SPARE PARTS, October 2009 – now

- 1: Aquadimmer handle (Order-nr. 47804000)
- 2: Stop (Order-nr. 47723000)
- 3: Aquadimmer (Order-nr. 47364000)
- 4: Water flow (Order-nr. 47887000)
- 5: Handle (Order-nr. 47803000)
- 6: Fitting ring (Order-nr. 47743000)
- 7: Thermostatic compact cartridge 1/2" (Order-nr. 47439000)
- 8: Non-return valve (Order-nr. 47189000)
- 8.1: Dirt strainer (Order-nr. 0726400M)
- 8.2: Non-return valve (Order-nr. 08565000)
- 8.3: O-ring  $\varnothing 17 \times \varnothing 2$  (Order-nr. 0305500M)
- 9: S-union (Order-nr. 12693000)
- 10: Non-return valve (Order-nr. 08565000)
- 11: Glide element (Order-nr. 12140000)
- 12: Dirt strainer (Order-nr. 0700200M)
- 13: Fibre seal  $\varnothing 18,5 \times \varnothing 12 \times 2$  (Order-nr. 0138900M)
- 14: Dirt strainer (Order-nr. 0676800M)
- 15: Compensation disc (Order-nr. 27180000)\*
- 16: Socket spanner (Order-nr. 19332000)\*
- 17: GROHE TurboStat cartridge 1/2" (Order-nr. 47175000)\*
- 18: Temperature scale handle (Order-nr. 47811000)\*
- 19: Special spanner (Order-nr. 19377000)\*
- 20: Shower system pipe for retrofitting (Order-nr. 48053000)\*
- 21: Shower system pipe for retrofitting (Order-nr. 48054000)\*

\*Special accessories