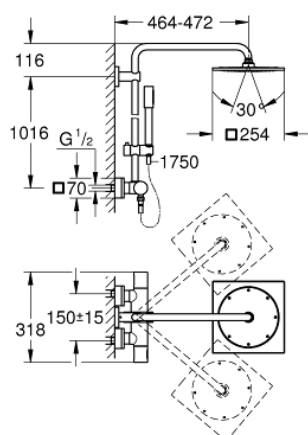


27 469 000 RAINSHOWER F-SERIES SYSTEM 254 SHOWER SYSTEM WITH THERMOSTAT FOR WALL MOUNTING



PRODUCT DESCRIPTION

- Colour: chrome
- consisting of:
 - horizontal swivable 450 mm shower arm
 - exposed thermostat with Aquadimmer function
 - allows change between:
 - head shower Rainshower F-Series 254 (27 285)
 - material: metal
 - with ball joint
 - rotation angle $\pm 20^\circ$
 - hand shower Sena (28 341 000)
 - adjustable in height with gliding element (12 140 000)
 - metal shower hose 1750 mm
- GROHE Water Saving 9,5 l/min flow limiter
- GROHE TurboStat
- GROHE SafeStop safety button at 38°C
- GROHE SafeStop Plus optional temperature limiter at 43°C included
- GROHE CoolTouch
- GROHE DreamSpray perfect flow
- GROHE Long-Life finish
- SpeedClean anti-limescale system
- Inner WaterGuide for a longer life
- suitable for instantaneous heaters from 18 kW/h
- minimum flow rate 7 l/min



27 469 000 RAINSHOWER F-SERIES SYSTEM 254 SHOWER SYSTEM WITH THERMOSTAT FOR WALL MOUNTING



SPARE PARTS, July 2016 – now

- 1: Aquadimmer handle (Order-nr. 47804000)
- 2: Stop (Order-nr. 47723000)
- 3: Aquadimmer (Order-nr. 47364000)
- 4: Water flow (Order-nr. 47887000)
- 5: Temperature scale handle (Order-nr. 47811000)
- 6: Fitting ring (Order-nr. 47743000)
- 7: Thermostatic compact cartridge 1/2" (Order-nr. 47439000)
- 8: Non-return valve (Order-nr. 47189000)
- 8.1: Dirt strainer (Order-nr. 0726400M)
- 8.2: Non-return valve (Order-nr. 08565000)
- 8.3: O-ring $\varnothing 17 \times \varnothing 2$ (Order-nr. 0305500M)
- 9: S-union (Order-nr. 47824000)
- 10: Non-return valve (Order-nr. 08565000)
- 11: Glide element (Order-nr. 12140000)
- 12: Dirt strainer (Order-nr. 0700200M)
- 13: Spare part set (Order-nr. 45933000)
- 14: Compensation disc (Order-nr. 27617000)*
- 15: Shower system pipe for retrofitting (Order-nr. 48053000)*
- 16: Shower system pipe for retrofitting (Order-nr. 48054000)*
- 17: Socket spanner (Order-nr. 19332000)*
- 18: GROHE TurboStat cartridge 1/2" (Order-nr. 47175000)*
- 19: Special spanner (Order-nr. 19377000)*

*Special accessories