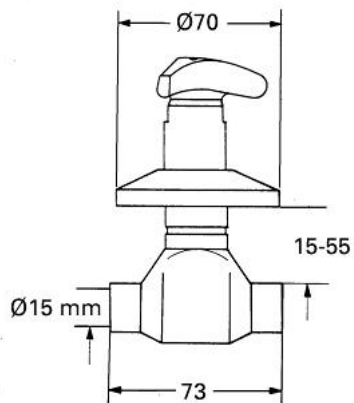


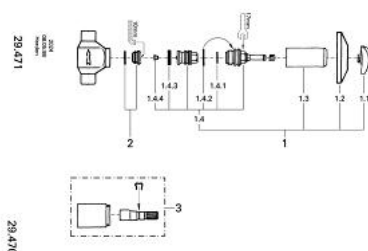
29 470 000 **ATLANTA CONCEALED VALVE 1/2"**



PRODUCT DESCRIPTION

- Colour: chrome
- soldered connection $\varnothing 15$ mm
- Trecorn handle
- sliding escutcheon
- marking: blue
- GROHE Long-Life finish

29 470 000 ATLANTA CONCEALED VALVE 1/2"



SPARE PARTS, January 1978 – now

- 1: Headpart 1/2" (Order-nr. 11501000)
- 1.1: Trecorn Handle (Order-nr. 06113000)
- 1.2: Escutcheon (Order-nr. 06386000)
- 1.3: Sleeve 1/2" (Order-nr. 06136000)
- 1.4: Headpart 1/2" (Order-nr. 07147000)
- 1.4.1: Sealing washer Ø 6 x Ø 2 (Order-nr. 0128300M)
- 1.4.2: O-ring Ø 18.2 x Ø 1.7 (Order-nr. 0392400M)
- 1.4.3: Seal (Order-nr. 0529100M)
- 1.4.4: Nut (Order-nr. 0529200M)
- 2: Seat (Order-nr. 45023000)
- 3: Extension set, 40 mm (Order-nr. 06427000)*

*Special accessories