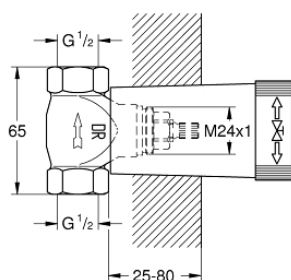


29 800 000 **CONCEALED STOP-VALVE, 1/2"**

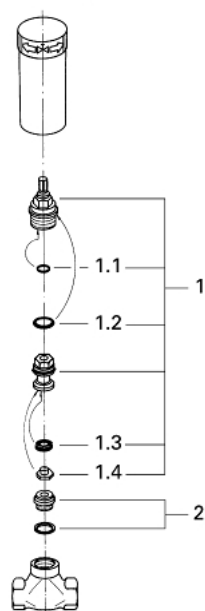


PRODUCT DESCRIPTION

- Colour: chrome
- pre-assembled headpart 1/2"
- short spindle
- protection sleeve
- threaded union 1/2"
- DR-brass



29 800 000 **CONCEALED STOP-VALVE, 1/2"**



SPARE PARTS, January 1986 – now

1: Headpart 1/2" (Order-nr. 07146000)

1.1: Sealing washer Ø 6 x Ø 2 (Order-nr. 0128300M)

1.2: O-ring Ø 18.2 x Ø 1.7 (Order-nr. 0392400M)

1.3: Seal (Order-nr. 0529100M)

2: Seat (Order-nr. 45023000)