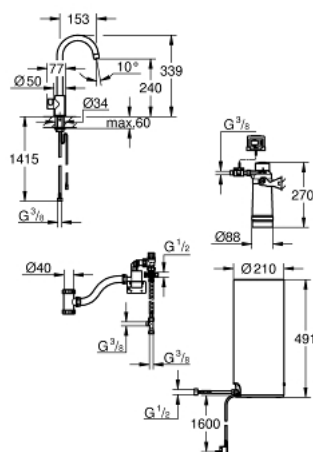


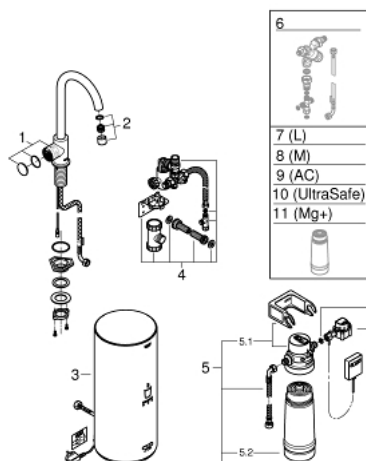
30 080 001 GROHE RED MONO PILLAR TAP AND L SIZE BOILER



PRODUCT DESCRIPTION

- Colour: chrome
- consisting of:
 - GROHE Red Mono pillar tap
 - single hole installation
 - C-spout
 - GROHE ChildLock push buttons for boiling water
 - TÜV certified triple electronic safeguards against accidental activation of boiling water
 - GROHE Long-Life finish
 - insulated tubular spout
 - swivel area 150°
 - connection to GROHE Red boiler
 - GROHE Red boiler L size
 - reservoir for boiling and hot water
 - 5.5 liter 100° C boiling water
 - 7 liter total capacity
 - required inlet pressure: 1-7 bar
 - with flexible connection hose and outlet for boiling water
 - CE approved
 - power supply 230 V 50 Hz
 - max. power consumption 2100 W
 - standby power consumption 15 W
 - energy efficiency class A
 - GROHE Blue S-Size filter starter set
 - for protection of the boiler from limescale
 - capacity 600 l at 20° dKH
 - flow rate measuring unit

30 080 001 GROHE RED MONO PILLAR TAP AND L SIZE BOILER



SPARE PARTS, August 2013 – now

- 1: Operating unit (Order-nr. 46997000)
- 2: Mousseur (Order-nr. 13999000)
- 3: Boiler Size L (Order-nr. 40831001)
- 4: Safety group (Order-nr. 48371000)
- 5: S-size filter starter set (Order-nr. 40438001)
- 5.1: Filter head (Order-nr. 64508001)
- 5.2: Filter S-Size (Order-nr. 40404001)
- 6: Mixing valve (Order-nr. 40841001)*
- 7: Filter L-Size (Order-nr. 40412001)*
- 8: Filter M-Size (Order-nr. 40430001)*
- 9: Activated carbon filter (Order-nr. 40547001)*
- 10: UltraSafe filter (Order-nr. 40575001)*
- 11: Magnesium+ filter (Order-nr. 40691001)*

*Special accessories