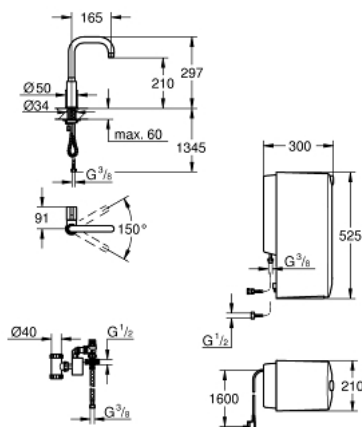


30 157 DC0 GROHE RED MONO PILLAR TAP AND COMBI-BOILER (8 LITERS)

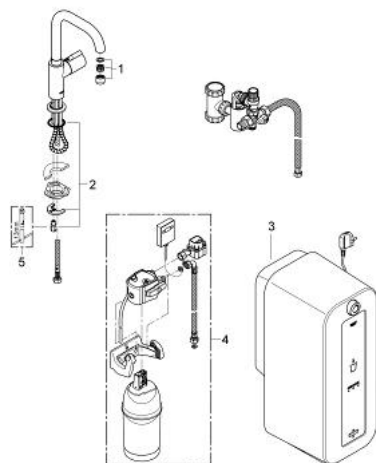


PRODUCT DESCRIPTION

- Colour: supersteel
- consisting of:
 - GROHE Red Mono pillar tap
 - for boiling water
 - single hole installation
 - U-spout
 - GROHE ChildLock handle for boiling water
 - certified safety handle with a pull and turn closure
 - headpart 1/2"
 - GROHE Long-Life finish
 - GROHE CoolTouch
 - swivel, insulated tubular spout
 - stop limiter
 - flexible connection hoses
 - connection to GROHE Red boiler
 - protected against backflow
 - GROHE Red combi boiler
 - reservoir for boiling and hot water
 - 6 liter boiling water 100° C or 11 liter hot water 55° C
 - with thermostat
 - adjustable from 35° - 75° C
 - pressure: 1-7 bar
 - with flexible connection hoses and connection thread for boiling water
 - CE approved
 - power supply 230 V 50 Hz 30
 - max. power consumption 2100 W
 - standby power consumption 15 W
 - dimensions boiler: 525 x 210 x 300 mm
 - Energy efficiency class water heater: B



30 157 DC0 GROHE RED MONO PILLAR TAP AND COMBI-BOILER (8 LITERS)



SPARE PARTS, October 2010 – now

- 1: Mousseur (Order-nr. 13999DC0)
- 2: Shank mounting kit (Order-nr. 46249000)
- 3: Combi boiler (EU) (Order-nr. 40431000)
- 4: Filter with filter head (Order-nr. 40438000)*
- 5: Mounting wrench (Order-nr. 19017000)*

*Special accessories