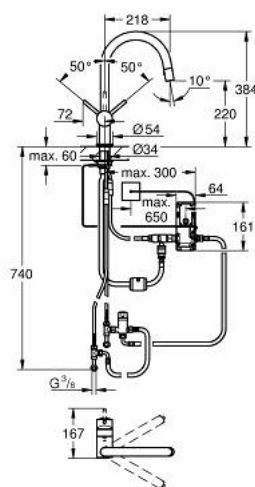


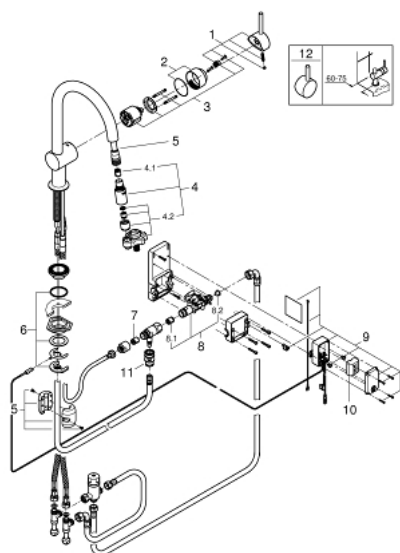
## 30 276 001 FLAIR TOUCH ELECTRONIC SINGLE-LEVER SINK MIXER 1/2"



### PRODUCT DESCRIPTION

- Colour: chrome
- C-spout
- Touch: activation of water via skin contact
- battery supply 6 V lithium-battery, type CR-P2
- CE approved
- solenoid valve
- fixed value mixing valve
- automatic safety stop after 60 sec. (factory set)
- type of protection IP 44
- GROHE SilkMove 46 mm ceramic cartridge
- adjustable flow rate limiter
- swivel tubular spout
- swivel area 360°
- diverter: laminar spray/SpeedClean shower jet
- automatic return to laminar spray
- flexible connection hoses
- rapid installation system
- protected against backflow
- GROHE Long-Life finish
- pull-out mousseur spray
- single hole installation

## 30 276 001 FLAIR TOUCH ELECTRONIC SINGLE-LEVER SINK MIXER 1/2"



### SPARE PARTS, May 2015 – now

- 1: Lever (Order-nr. 46015000)
- 2: Cap (Order-nr. 46025000)
- 3: Cartridge (Order-nr. 46048000)
- 4: Pull out spray (Order-nr. 46857000)
- 4.1: Non-return valve (Order-nr. 08565000)
- 4.2: Flow straightener (Order-nr. 13997000)
- 5: Shower hose (Order-nr. 46881000)
- 6: Shank mounting kit (Order-nr. 46345000)
- 7: Non-return valve (Order-nr. 08565000)
- 8: Solenoid valve (Order-nr. 48213000)
- 8.1: Non-return valve (Order-nr. 08565000)
- 8.2: Dirt strainer (Order-nr. 42395000)
- 9: Control unit (Order-nr. 48214000)
- 10: Battery (Order-nr. 42886000)
- 11: Quick coupling (Order-nr. 46338000)
- 12: Lever (Order-nr. 40684000)\*

\*Special accessories