

30 276 002 FLAIR TOUCH ELECTRONIC SINGLE-LEVER SINK MIXER 1/2"

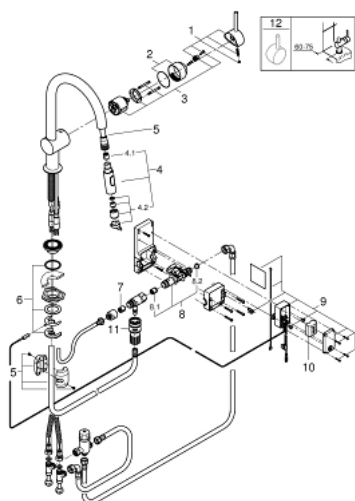


PRODUCT DESCRIPTION

- Colour: chrome
- C-spout
- single hole installation
- Touch: activation of water via skin contact
- battery supply 6 V lithium-battery, type CR-P2
- CE approved
- solenoid valve
- fixed value mixing valve
- automatic safety stop after 60 sec. (factory set)
- type of protection IP 44
- GROHE SilkMove 46 mm ceramic cartridge
- GROHE Long-Life finish
- Lead and Nickel Free Inner Water Ways
- adjustable flow rate limiter
- swivel tubular spout
- swivel area 360°
- pull-out dual spray
- diverter: laminar spray/SpeedClean shower jet
- automatic return to laminar spray
- flexible connection hoses
- rapid installation system
- protected against backflow



30 276 002 FLAIR TOUCH ELECTRONIC SINGLE-LEVER SINK MIXER 1/2"



SPARE PARTS, July 2017 – now

- 1: Lever (Order-nr. 46015000)
- 2: Cap (Order-nr. 46025000)
- 3: Cartridge (Order-nr. 46048000)
- 4: Pull out spray (Order-nr. 48416000)
- 4.1: Non-return valve (Order-nr. 08565000)
- 4.2: Flow straightener (Order-nr. 48347000)
- 5: Shower hose (Order-nr. 48293000)
- 6: Shank mounting kit (Order-nr. 46345000)
- 7: Non-return valve (Order-nr. 08565000)
- 8: Solenoid valve (Order-nr. 48213000)
- 8.1: Non-return valve (Order-nr. 08565000)
- 8.2: Dirt strainer (Order-nr. 42395000)
- 9: Control unit (Order-nr. 48214000)
- 10: Battery (Order-nr. 42886000)
- 11: Quick coupling (Order-nr. 46338000)
- 12: Lever (Order-nr. 40684000)*

*Special accessories