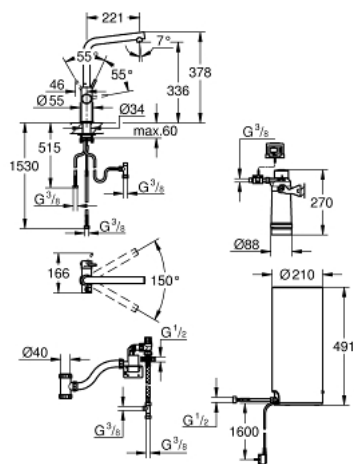


30 325 DC1 GROHE RED DUO FAUCET AND L SIZE BOILER



PRODUCT DESCRIPTION

- Colour: supersteel
- consisting of:
- GROHE Red Duo single-lever sink mixer
- single hole installation
- L-spout
- GROHE ChildLock push buttons for boiling water
- TÜV certified triple electronic safeguards against accidental activation of boiling water
- GROHE Long-Life finish
- GROHE SilkMove 28 mm ceramic cartridge
- insulated tubular spout
- swivel area 150°
- separate water ways
- flexible connection hoses
- connection to GROHE Red boiler
- GROHE Red boiler L size
- reservoir for boiling and hot water
- 5.5 liter 100° C boiling water
- 7 liter total capacity
- required inlet pressure: 1-7 bar
- with flexible connection hose and outlet for boiling water
- CE approved
- power supply 230 V 50 Hz
- max. power consumption 2100 W
- standby power consumption 15 W
- energy efficiency class A
- GROHE Blue S-Size filter starter set
- for protection of the boiler from limescale
- capacity 600 l at 20° dKH
- flow rate measuring unit

30 325 DC1 GROHE RED DUO FAUCET AND L SIZE BOILER



SPARE PARTS, September 2016 – now

- 1: Fitting ring (Order-nr. 07419000)
- 2: Cap (Order-nr. 46581DC0)
- 3: Lever (Order-nr. 46957DC0)
- 4: Cartridge (Order-nr. 46580000)
- 5: Mousseur (Order-nr. 13999DC0)
- 6: Operating unit (Order-nr. 46997DC0)
- 7: Boiler Size L (Order-nr. 40831001)
- 8: Safety group (Order-nr. 48371000)
- 9: S-size filter starter set (Order-nr. 40438001)
- 9.1: Filter head (Order-nr. 64508001)
- 9.2: Filter S-Size (Order-nr. 40404001)
- 10: Mixing valve (Order-nr. 40841001)*
- 11: Filter L-Size (Order-nr. 40412001)*
- 12: Filter M-Size (Order-nr. 40430001)*
- 13: Activated carbon filter (Order-nr. 40547001)*
- 14: UltraSafe filter (Order-nr. 40575001)*
- 15: Magnesium+ filter (Order-nr. 40691001)*

*Special accessories