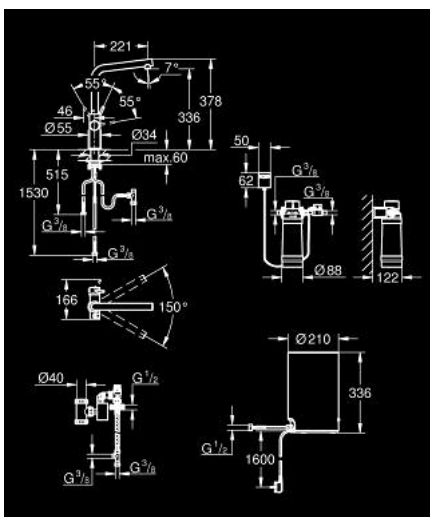


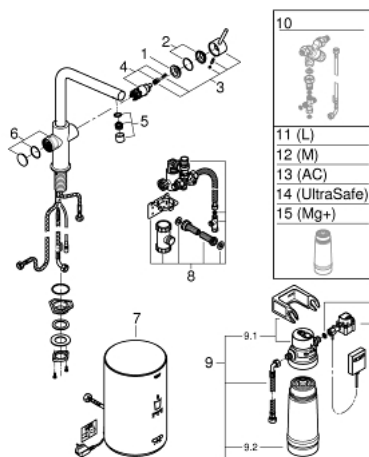
30 327 AL1 GROHE RED DUO FAUCET AND M SIZE BOILER



PRODUCT DESCRIPTION

- Colour: brushed hard graphite
- consisting of:
 - GROHE Red Duo single-lever sink mixer
 - single hole installation
 - L-spout
 - GROHE ChildLock push buttons for boiling water
 - TÜV certified triple electronic safeguards against accidental activation of boiling water
 - GROHE Long-Life finish
 - GROHE SilkMove 28 mm ceramic cartridge
 - insulated tubular spout
 - swivel area 150°
 - separate water ways
 - flexible connection hoses
 - connection to GROHE Red boiler
 - GROHE Red boiler M size
 - reservoir for boiling and hot water
 - 3 liter 100° C boiling water
 - 4 liter total capacity
 - required inlet pressure: 1-7 bar
 - with flexible connection hose and outlet for boiling water
 - CE approved
 - power supply 230 V 50 Hz
 - max. power consumption 2100 W
 - standby power consumption 15 W
 - energy efficiency class A
 - GROHE Blue S-Size filter starter set
 - for protection of the boiler from limescale
 - capacity 600 l at 20° dKH
 - flow rate measuring unit

30 327 AL1 GROHE RED DUO FAUCET AND M SIZE BOILER



SPARE PARTS, March 2018 – now

- 1: Fitting ring (Order-nr. 07419000)
- 2: Cap (Order-nr. 46581AL0)
- 3: Lever (Order-nr. 46957AL0)
- 4: Cartridge (Order-nr. 46580000)
- 5: Mousseur (Order-nr. 13999AL0)
- 6: Operating unit (Order-nr. 46997AL0)
- 7: Boiler Size M (Order-nr. 40830001)
- 8: Safety group (Order-nr. 48371000)
- 9: S-size filter starter set (Order-nr. 40438001)
- 9.1: Filter head (Order-nr. 64508001)
- 9.2: Filter S-Size (Order-nr. 40404001)
- 10: Mixing valve (Order-nr. 40841001)*
- 11: Filter L-Size (Order-nr. 40412001)*
- 12: Filter M-Size (Order-nr. 40430001)*
- 13: Activated carbon filter (Order-nr. 40547001)*
- 14: UltraSafe filter (Order-nr. 40575001)*
- 15: Magnesium+ filter (Order-nr. 40691001)*

*Special accessories