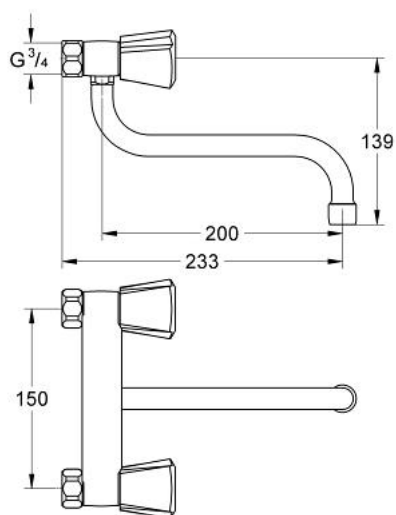


31 071 000 **COSTA TREND WALL SINK MIXER 1/2"**

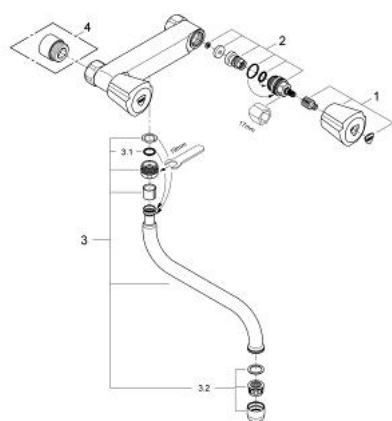


PRODUCT DESCRIPTION

- Colour: chrome
- Trecorn handle
- chrome plated plastic
- heat-insulated, screwed union
- swivel spout
- without connection unions
- mousseur
- GROHE Long-Life finish



31 071 000 **COSTA TREND WALL SINK MIXER 1/2"**



SPARE PARTS, July 2008 – now

1: ABS handle 1/2" (Order-nr. 45970000)

2: Headpart 1/2" (Order-nr. 07146000)

3: Tubular spout (Order-nr. 13051000)

3.1: O-ring Ø 12 x Ø 2 (Order-nr. 0128000M)

3.2: Mousseur (Order-nr. 13928000)

4: Extension 3/4", 20 mm (Order-nr. 0713000M)*

*Special accessories