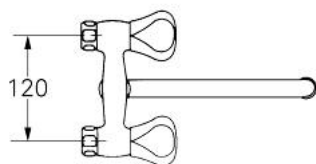
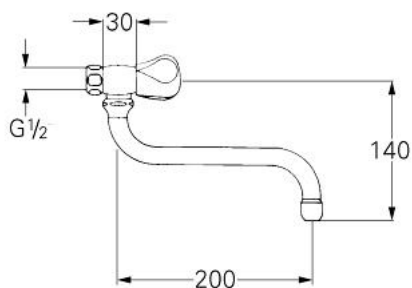


31 163 000 **ATLANTA WALL MOUNTED SINK MIXER**

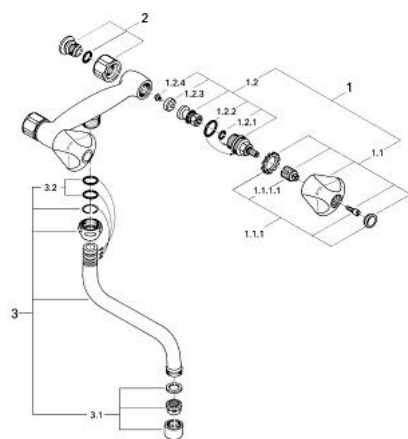


PRODUCT DESCRIPTION

- Colour: chrome
- Treflor handles
- GROHE Long-Life headpart
- GROHE Long-Life finish
- swivel tubular spout
- mousseur
- S-unions



31 163 000 ATLANTA WALL MOUNTED SINK MIXER



SPARE PARTS, January 1981 – now

- 1: Headpart 1/2" (Order-nr. 11086000)
- 1.1: Treflor handle 1/2" (Order-nr. 45124000)
- 1.1.1: Handle fixation (Order-nr. 45123000)
- 1.1.1.1: Snap insert (Order-nr. 0538600M)
- 1.2: Headpart 1/2" (Order-nr. 07146000)
- 1.2.1: Sealing washer Ø 6 x Ø 2 (Order-nr. 0128300M)
- 1.2.2: O-ring Ø 18.2 x Ø 1.7 (Order-nr. 0392400M)
- 1.2.3: Seal (Order-nr. 0529100M)
- 2: Screw connection (Order-nr. 45454000)
- 3: S spout (Order-nr. 13084000)
- 3.1: Mousseur (Order-nr. 13928000)
- 3.2: Sealing washer (Order-nr. 0128500M)