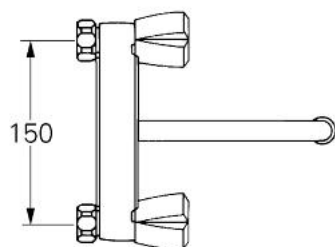
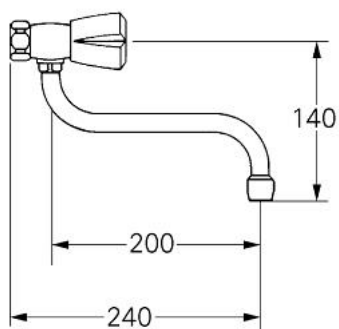


31 182 000 **WALL SINK MIXER 1/2"**

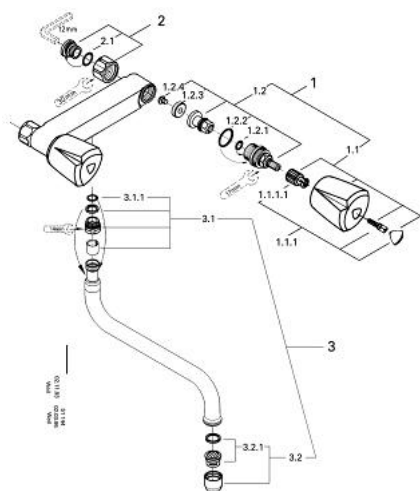


PRODUCT DESCRIPTION

- Colour: chrome
- Trecorn handle
- chrome plated plastic
- heat-insulated, screwed union
- swivel spout
- without connection unions
- mousseur
- GROHE Long-Life finish



31 182 000 WALL SINK MIXER 1/2"



31.182

SPARE PARTS, January 1985 – now

1: Headpart 1/2" (Order-nr. 45534000)

1.1: ABS handle 1/2" (Order-nr. 45970000)

1.1.1: Snap insert (Order-nr. 0538600M)

1.2: Headpart 1/2" (Order-nr. 07146000)

1.2.1: Sealing washer Ø 6 x Ø 2 (Order-nr. 0128300M)

1.2.2: O-ring Ø 18.2 x Ø 1.7 (Order-nr. 0392400M)

1.2.3: Seal (Order-nr. 0529100M)

2: Screw connection 1/2" (Order-nr. 45044000)

2.1: Seal Ø 15 x Ø 2 (Order-nr. 0311900M)

3: Tubular spout (Order-nr. 13051000)

3.1: O-ring Ø 12 x Ø 2 (Order-nr. 0128000M)

3.2: Mousseur (Order-nr. 13928000)