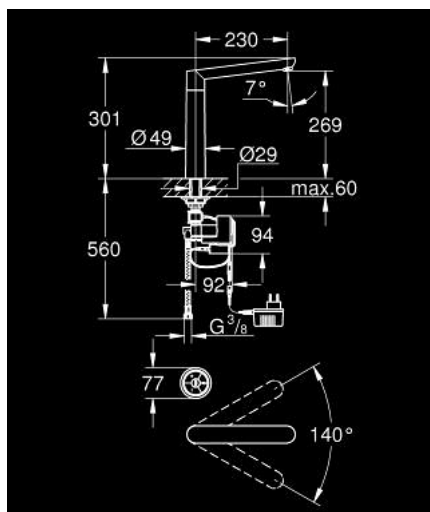


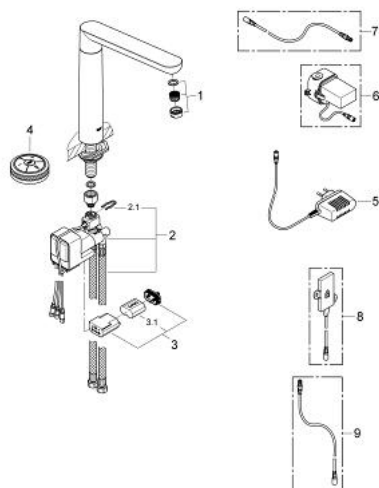
31 247 000 GROHE K7 F-DIGITAL DIGITAL SINK MIXER



PRODUCT DESCRIPTION

- Colour: chrome
- including digital mixing device
- single hole installation
- Digital Controller - intuitive multifunctional operating unit
- - wireless technology
- - temperature and flow control
- - pause function
- - memory function
- - LED-ring
- digital mixing device
- - digitally controlled valve
- - integrated temperature sensor
- default setting configurable during installation:
- - automatic safety shut-off after 60 sec.
- swivel cast spout
- swivel area 140°
- SpeedClean mousseur
- flexible connection hoses
- incl. plug power supply 65 790 000
- requires built-in power supply 36 078 000
- min. recommended pressure 1.0 bar

31 247 000 GROHE K7 F-DIGITAL DIGITAL SINK MIXER



SPARE PARTS, July 2010 – now

- 1: Mousseur (Order-nr. 48173000)
- 2: Mixing device (Order-nr. 48163000)
- 2.1: Fixing clamp (Order-nr. 6554100M)
- 3: Battery housing (Order-nr. 42393000)
- 3.1: Battery (Order-nr. 42886000)
- 4: Digital controller
- Remote controller for bath or shower (Order-nr. 36309000)
- 5: Plug power supply 230 V (Order-nr. 65790000)
- 6: Plug power supply 110-240 V (Order-nr. 36078000)*
- 7: Connection wire (Order-nr. 47727000)*
- 8: Transceiver (Order-nr. 36356000)*
- 9: Connection wire (Order-nr. 65815000)*

*Special accessories