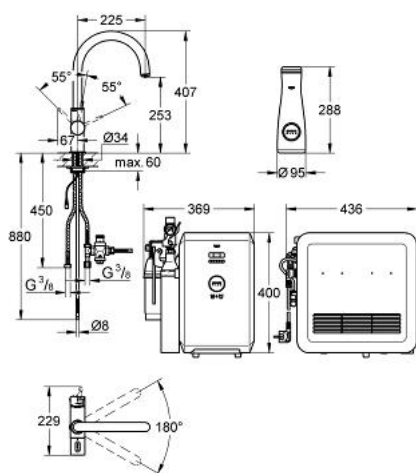


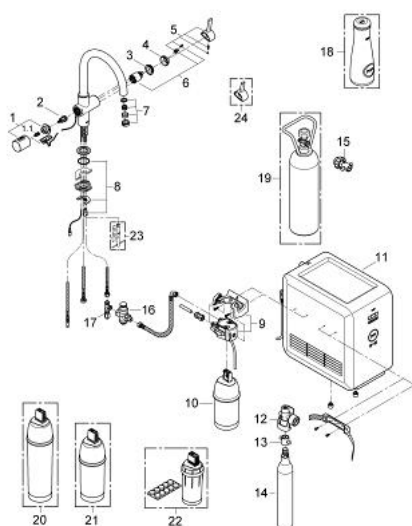
31 323 000 GROHE BLUE PROFESSIONAL STARTER KIT



PRODUCT DESCRIPTION

- Colour: chrome
- consisting of:
 - GROHE Blue single-lever sink mixer with filter function
 - single hole installation
 - C-spout
 - separate handle for 3 types of filtered and chilled table water
 - still, medium, fizzy
 - headpart 1/2"
 - GROHE SilkMove 35 mm ceramic cartridge
 - adjustable flow rate limiter
 - GROHE Long-Life finish
 - swivel tubular spout
 - swivel area 180°
 - separate inner water ways for filtered and non-filtered water
 - flexible connection hoses
 - type of protection IP 55
 - CE approved
 - main switching power supply 100 - 240 V AC 50/60 Hz with safety extra-low voltage (SELV) 6 V DC to filter change display unit
 - adjustable for 600 litre, 1500 litre or 3000 litre filter cartridges
 - GROHE Blue chiller and carbonizer
 - 230 V
 - GROHE Blue 600 l filter
 - GROHE Blue size S filter, filter head with flexible adjustment
 - GROHE Blue 425 g CO₂-carbonization bottle
 - GROHE Blue carafe
 - noise classification I in accordance with DIN 4109
 - replaces 31 079 000
 - min. recommended pressure 1.0 bar

31 323 000 GROHE BLUE PROFESSIONAL STARTER KIT



SPARE PARTS, August 2012 – now

- 1: Handle (Order-nr. 46652000)
- 1.1: Snap insert (Order-nr. 0538600M)
- 2: Headpart (Order-nr. 46713000)
- 3: Screw coupling (Order-nr. 46460000)
- 4: Cap (Order-nr. 46116000)
- 5: Lever (Order-nr. 46653000)
- 6: Cartridge (Order-nr. 46374000)
- 7: Mousseur (Order-nr. 64374000)
- 8: Shank mounting kit (Order-nr. 46249000)
- 9: Filter head (Order-nr. 64508000)
- 10: Filter (Order-nr. 40404000)
- 11: Cooler and carbonizer (Order-nr. 40554000)
- 12: Pressure indicator (Order-nr. 46717000)
- 12.1: CO₂ adapter (Order-nr. 40962000)
- 13: Adapter (Order-nr. 40453000)
- 14: Starter kit 425 g CO₂ bottles (4 pieces) (Order-nr. 40422000)
- 15: Adapter (Order-nr. 40454000)
- 16: Pressure reducing valve (Order-nr. 40452000)
- 17: Original WAS® T-piece 3/8" (Order-nr. 41007000)
- 18: Glass carafe (Order-nr. 40405000)*
- 19: Starter kit 2 kg CO₂ bottle (Order-nr. 40423000)*
- 20: Filter (Order-nr. 40412000)*
- 21: Filter (Order-nr. 40430000)*
- 22: Cleaning cartridge (Order-nr. 40434000)*
- 23: Mounting wrench (Order-nr. 19017000)*
- 24: Shorter mixed water lever (Order-nr. 40621000)

*Special accessories