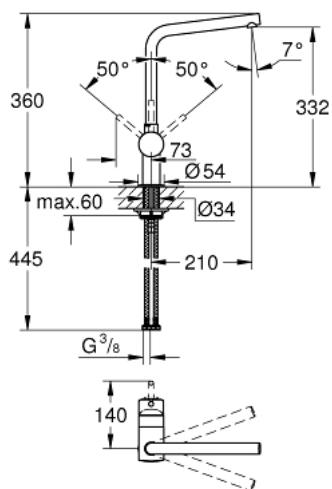


## 31 375 DC0 MINTA SINGLE-LEVER SINK MIXER 1/2"

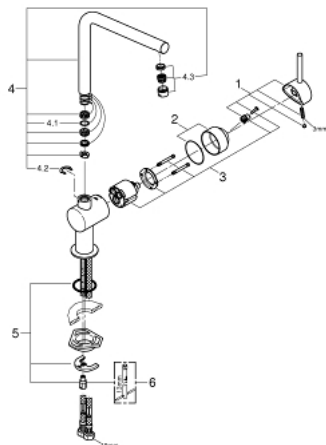


### PRODUCT DESCRIPTION

- Colour: supersteel
- L-spout
- single hole installation
- GROHE Long-Life finish
- GROHE SilkMove 46 mm ceramic cartridge
- adjustable flow rate limiter
- swivel tubular spout
- swivel range 0°/150°/360°
- flexible connection hoses
- protected against backflow
- rapid installation system
- maximum flow rate (at 3 bar): 11.5 l/min
- min. recommended pressure 1.0 bar



## 31 375 DC0 MINTA SINGLE-LEVER SINK MIXER 1/2"



### SPARE PARTS, September 2012 – September 2014

- 1: Lever (Order-nr. 46015DC0)
  - 2: Cap (Order-nr. 46025DC0)
  - 3: Cartridge (Order-nr. 46048000)
  - 4: Spout (Order-nr. 13348DC0)
  - 4.1: Sealing washer (Order-nr. 0128500M)
  - 4.2: Safety ring (Order-nr. 0485300M)
  - 4.3: Mousseur (Order-nr. 64186DC0)
  - 5: Shank mounting kit (Order-nr. 46249000)
  - 6: Mounting wrench (Order-nr. 19017000)\*
- \*Special accessories