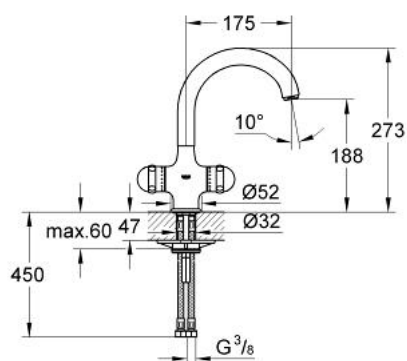


31 403 000 **SENTOSA SINGLE-HOLE SINK MIXER 1/2"**

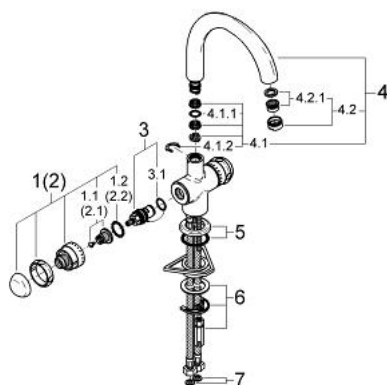


PRODUCT DESCRIPTION

- Colour: chrome
- Carbodur ceramic headparts 1/2", 180°
- GROHE Long-Life finish
- swivel tubular spout
- mousseur
- stop limiter
- flexible connection hoses
- rapid installation system



31 403 000 SENTOSA SINGLE-HOLE SINK MIXER 1/2"



SPARE PARTS, January 1993 – now

- 1: Handle 1/2", red (Sentosa) (Order-nr. 45539IP0)
- 1.1: Replacement handle connection kit (Order-nr. 45186000)
- 1.1.1: O-ring Ø 18.2 x Ø 1.7 (Order-nr. 0392400M)
- 1.2: Guide ring (Order-nr. 0202100M)
- 2: Handle 1/2" (Sentosa) (Order-nr. 45538IP0)
- 2.1: Replacement handle connection kit (Order-nr. 45186000)
- 2.2: Guide ring (Order-nr. 0202100M)
- 3: Ceramic headpart 1/2" (Order-nr. 45346000)
- 3.1: O-ring Ø 18.2 x Ø 1.7 (Order-nr. 0392400M)
- 4: Tubular spout (Order-nr. 13015000)
- 4.1: Sealing washer (Order-nr. 0128500M)
- 4.2: Safety ring (Order-nr. 0485300M)
- 4.3: Mousseur (Order-nr. 13929000)
- 5: Escutcheon (Order-nr. 45540000)
- 6: Shank mounting kit (Order-nr. 46249000)
- 7: Fibre seal ø 14.5 x ø 8 x 2 (Order-nr. 0138300M)