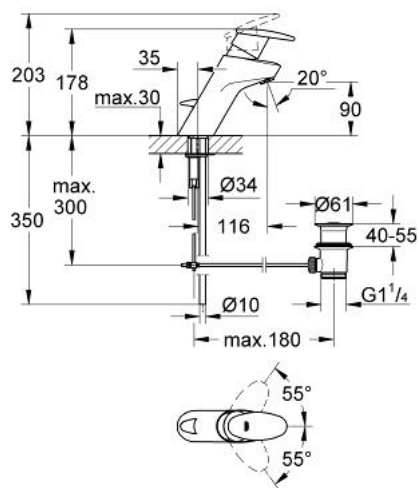


## 33 134 IP0 TARON SINGLE-LEVER BASIN MIXER 1/2"

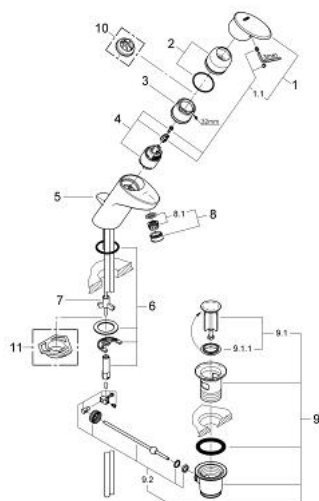


### PRODUCT DESCRIPTION

- Colour: chrome/ matt chrome
- single hole installation
- GROHE SilkMove 35 mm ceramic cartridge
- adjustable flow rate limiter
- mousseur
- pop-up waste set 1 1/4"
- rapid installation system
- copper pipes
- optional temperature limiter ref. no. 46 375
- height 178 mm
- GROHE Long-Life finish



## 33 134 IP0 TARON SINGLE-LEVER BASIN MIXER 1/2"



### SPARE PARTS, January 2002 – now

- 1: Lever (Order-nr. 46371IP0)
- 1.1: Fixing set (Order-nr. 46372V00)
- 2: Cap (Order-nr. 46373000)
- 3: Ring (Order-nr. 03425000)
- 4: Cartridge (Order-nr. 46374000)
- 5: Pop-up rod (Order-nr. 46376000)
- 6: Shank mounting kit (Order-nr. 46122000)
- 7: Compensation ring (Order-nr. 03435000)
- 8: Mousseur (Order-nr. 13929000)
- 8.1: Replacement flow control M22x1 and M24x1 (Order-nr. 45002000)
- 9: Waste set 1 1/4" (Order-nr. 28910000)
- 9.1: Plug (Order-nr. 07182000)
- 9.2: Eccentric rod (Order-nr. 07052000)
- 10: Temperature limiter (Order-nr. 46375000)\*
- 11: Support plate (Order-nr. 05334000)\*

\*Special accessories