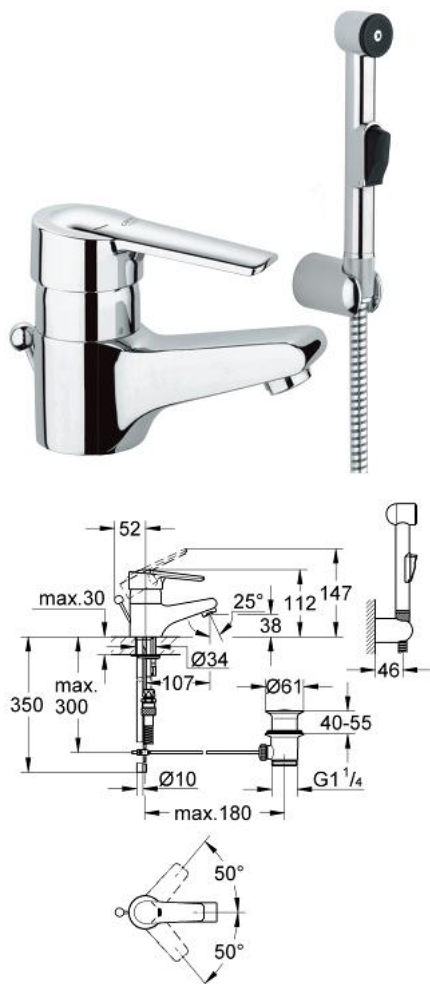


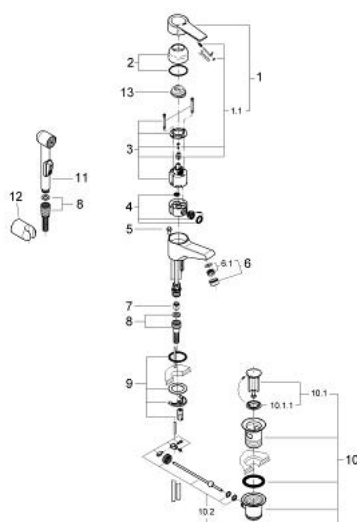
33 337 000 EUROSTYLE HYGIENICA SINGLE-LEVER BASIN MIXER 1/2"



PRODUCT DESCRIPTION

- Colour: chrome
- single hole installation
- GROHE SilkMove 46 mm ceramic cartridge
- adjustable flow rate limiter
- temperature limiter
- mousseur
- pop-up waste set
- shower set
- GROHE Long-Life finish

33 337 000 EUROSTYLE HYGIENICA SINGLE-LEVER BASIN MIXER 1/2"



SPARE PARTS, January 2002 – now

- 1: Lever (Order-nr. 46458000)
- 1.1: Fixing set (Order-nr. 46335000)
- 2: Cap (Order-nr. 46242000)
- 3: Cartridge (Order-nr. 46048000)
- 4: Diverter (Order-nr. 46466000)
- 5: Pop-up rod (Order-nr. 06329000)
- 6: Mousseur (Order-nr. 13929000)
- 6.1: Replacement flow control M22x1 and M24x1 (Order-nr. 45002000)
- 7: Non-return valve (Order-nr. 08565000)
- 8: Shower hose (Order-nr. 28151000)
- 9: Shank mounting kit (Order-nr. 46249000)
- 10: Waste set 1 1/4" (Order-nr. 28910000)
- 10.1: Plug (Order-nr. 07182000)
- 10.2: Eccentric rod (Order-nr. 07052000)
- 11: Hand shower 1 spray (Order-nr. 28343000)
- 12: Wall hand shower holder (Order-nr. 28605000)
- 13: Temperature limiter (Order-nr. 46308000)