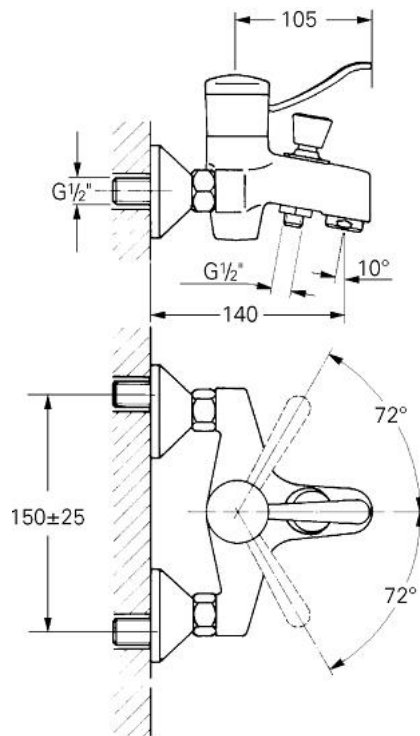


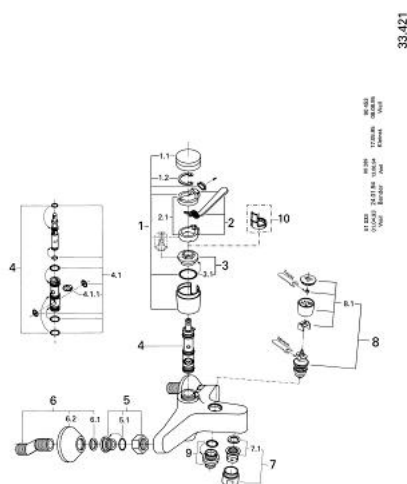
33 421 L00 **EUROMIX SINGLE-LEVER BATH MIXER 1/2"**



PRODUCT DESCRIPTION

- Colour: white
- wall mounted
- lockable automatic diverter: bath/shower
- mousseur
- S-unions
- GROHE Long-Life finish

33 421 L00 EUROMIX SINGLE-LEVER BATH MIXER 1/2"



SPARE PARTS, January 1978 – now

- 1: Head component (Order-nr. 46023L00)
- 1.1: Cap (Order-nr. 07244L00)
- 1.2: Safety ring (Order-nr. 05249000)
- 2: Lever 105 mm (Order-nr. 46026L00)
- 2.1: Replacement clamps (Order-nr. 46037000)
- 3: Headpart (Order-nr. 46022000)
- 3.1: Sealing washer Ø 30 x Ø 2.5 (Order-nr. 0296700M)
- 4: Cartridge from 1974 (Order-nr. 07000000)
- 4.1: Seal kit (Order-nr. 46090000)
- 4.1.1: Clip (Order-nr. 0011700M)
- 5: Screw connection 1/2" (Order-nr. 45044L00)
- 5.1: Seal Ø 15 x Ø 2 (Order-nr. 0311900M)
- 6: S-union (Order-nr. 12075L00)
- 6.1: Seal (Order-nr. 0138600M)
- 6.2: Escutcheon (Order-nr. 02210L0M)
- 7: Mousseur (Order-nr. 13927L00)
- 7.1: Replacement flow control M28x1 (Order-nr. 45029000)
- 8: Diverter (Order-nr. 06804L00)
- 8.1: Diverter knob (Order-nr. 07526L00)
- 9: Shower nipple (Order-nr. 46044000)
- 10: Temperature limiter (Order-nr. 00069000)*

*Special accessories