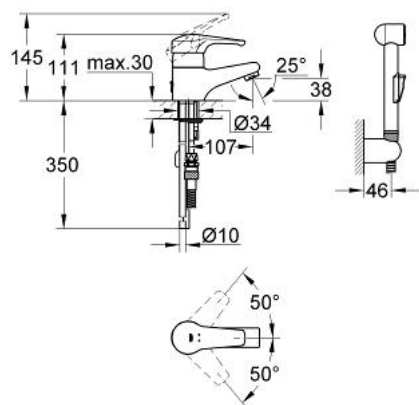


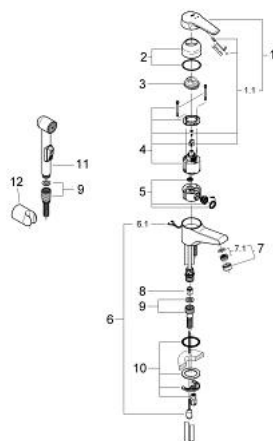
33 462 000 EUROSMART HYGIENICA SINGLE-LEVER BASIN MIXER 1/2"

PRODUCT DESCRIPTION

- Colour: chrome
- single hole installation
- GROHE SilkMove 46 mm ceramic cartridge
- mousseur
- with chain ring
- with shower set
- temperature limiter
- GROHE Long-Life finish



33 462 000 EUROSMART HYGIENICA SINGLE-LEVER BASIN MIXER 1/2"



SPARE PARTS, January 2002 – now

- 1: Lever (Order-nr. 46437000)
- 1.1: Fixing set (Order-nr. 46335000)
- 2: Cap (Order-nr. 46242000)
- 3: Temperature limiter (Order-nr. 46308000)
- 4: Cartridge (Order-nr. 46048000)
- 5: Diverter (Order-nr. 46466000)
- 6: Chain (Order-nr. 06815000)
- 6.1: Chain support (Order-nr. 0116100M)
- 7: Mousseur (Order-nr. 13929000)
- 7.1: Replacement flow control M22x1 and M24x1 (Order-nr. 45002000)
- 8: Non-return valve (Order-nr. 08565000)
- 9: Shower hose (Order-nr. 28151000)
- 10: Shank mounting kit (Order-nr. 46249000)
- 11: Hand shower 1 spray (Order-nr. 28343000)
- 12: Wall hand shower holder (Order-nr. 28605L00)