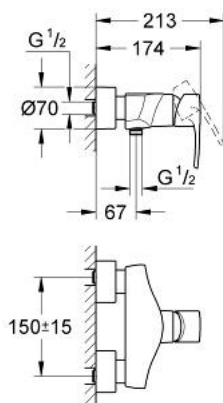


33 577 001 EUROPLUS SINGLE-LEVER SHOWER MIXER 1/2"

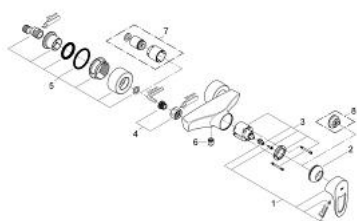


PRODUCT DESCRIPTION

- Colour: chrome
- wall mounted
- metal lever
- GROHE SilkMove 46 mm ceramic cartridge
- GROHE Long-Life finish
- adjustable flow rate limiter
- adjustable minimum flow rate approx. 2.5 l/min
- shower bottom outlet 1/2" with integrated non return valve
- covered S-unions with wall sealing
- optional temperature limiter ref. no. 46 375
- protected against backflow
- noise classification I in accordance with DIN 4109



33 577 001 EUROPLUS SINGLE-LEVER SHOWER MIXER 1/2"



SPARE PARTS, November 2005 – now

- 1: Lever (Order-nr. 46569000)
- 2: Cap (Order-nr. 46570000)
- 3: Cartridge (Order-nr. 46048000)
- 4: Screw connection 1/2" (Order-nr. 45044000)
- 5: S-union (Order-nr. 12693000)
- 6: Non-return valve (Order-nr. 08565000)
- 7: Extension set, 30 mm (Order-nr. 46238000)*
- 8: Temperature limiter (Order-nr. 46375000)*

*Special accessories