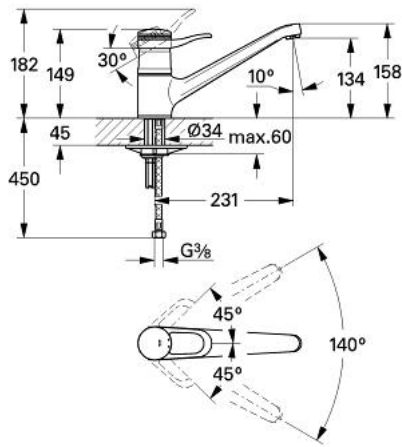


33 861 UL0 EUROPLUS SINGLE-LEVER SINK MIXER 1/2"



PRODUCT DESCRIPTION

- single hole installation
- GROHE SilkMove 46 mm ceramic cartridge
- adjustable flow rate limiter
- adjustable minimum flow rate approx. 2.5 l/min
- swivel cast spout with stop limiter
- mousseur
- flexible connection hoses
- rapid installation system
- GROHE Long-Life finish



33 861 UL0 EUROPLUS SINGLE-LEVER SINK MIXER 1/2"



SPARE PARTS, January 1987 – now

- 1: Lever (Order-nr. 46129UL0)
- 1.1: Cover cap (Order-nr. 46130UL0)
- 2: Cartridge (Order-nr. 46048000)
- 2.1: Seal kit (Order-nr. 46209000)
- 3: Cap (Order-nr. 01734UL0)
- 4: Mousseur (Order-nr. 13929UL0)
- 4.1: Replacement flow control M22x1 and M24x1 (Order-nr. 45002000)
- 5: Seal kit (Order-nr. 46077XX0)
- 6: Shank mounting kit (Order-nr. 46078000)
- 6.1: Support plate (Order-nr. 05334000)
- 7: Connection hose, 300 mm (Order-nr. 45120000)*

*Special accessories