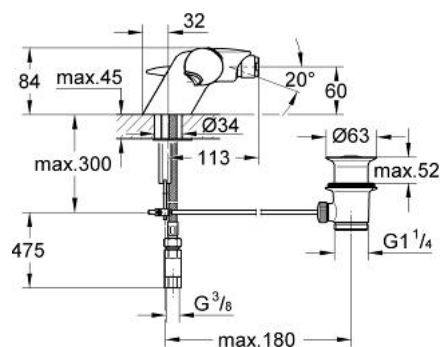


## 34 200 IP0 TARON THERMOSTATIC BIDET MIXER 1/2"

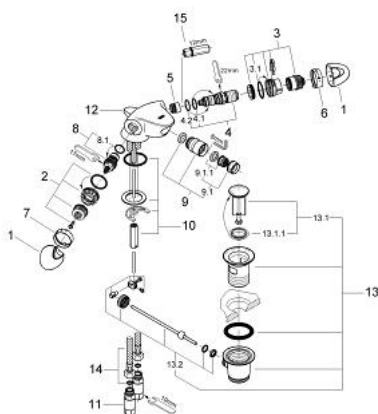


### PRODUCT DESCRIPTION

- Colour: chrome/ matt chrome
- single hole installation
- Carbodur ceramic headpart 1/2", 180°
- wax thermoelement
- maximum temperature stop at 43°C
- ball-joint mousseur
- pop-up waste set 1 1/4"
- flexible connection hoses
- rapid installation system



## 34 200 IP0 TARON THERMOSTATIC BIDET MIXER 1/2"



### SPARE PARTS, January 1998 – now

- 1: Handle (Order-nr. 47515IP0)
- 2: Fixing set (Order-nr. 47516000)
- 3: Stop ring + regulating nut (Order-nr. 47517000)
- 3.1: O-ring Ø 23 x Ø 2 (Order-nr. 45583000)
- 4: Thermo-element 3/8" (Order-nr. 47349000)
- 4.1: O-ring ø 15 x ø 2.5 (Order-nr. 0012300M)
- 4.2: O-ring ø 16 x ø 1.25 (Order-nr. 0122500M)
- 5: Seat for thermostat (Order-nr. 02406000)
- 6: Scale ring (Order-nr. 09428000)
- 7: Sleeve (Order-nr. 01983000)
- 8: Ceramic headpart 1/2" (Order-nr. 45882000)
- 8.1: O-ring Ø 18.2 x Ø 1.7 (Order-nr. 0392400M)
- 9: Ball joint mousseur (Order-nr. 13912000)
- 9.1: Mousseur (Order-nr. 13929000)
- 9.1.1: Replacement flow control M22x1 and M24x1 (Order-nr. 45002000)
- 10: Shank mounting kit (Order-nr. 46122000)
- 11: Non-return valve (Order-nr. 47518000)
- 12: Pop-up rod (Order-nr. 46376000)
- 13: Waste set 1 1/4" (Order-nr. 28910000)
- 13.1: Plug (Order-nr. 07182000)
- 13.2: Eccentric rod (Order-nr. 07052000)
- 14: Connection hose (Order-nr. 46255000)\*
- 15: Socket spanner (Order-nr. 19070000)\*

\*Special accessories