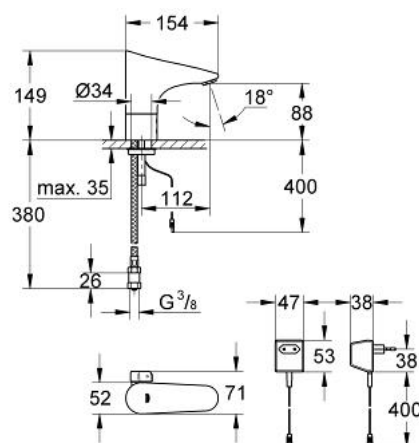


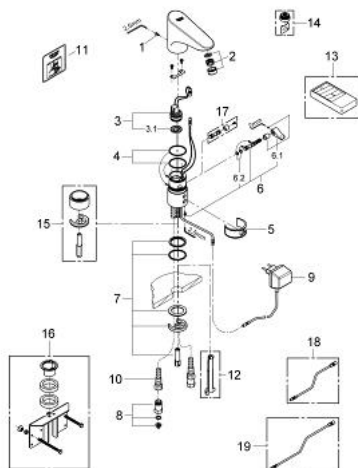
## 36 015 000 EUROPLUS E INFRA-RED ELECTRONIC BASIN MIXER 1/2"



### PRODUCT DESCRIPTION

- Colour: chrome
- with plug transformer 230 V, 50 Hz, 3,2 VA
- single hole installation
- rapid installation system
- safety stop after 60 sec.
- adjustable from 2 to 420 sec
- functions to activate with remote control 36 206 000:
- automatic flushing after 1 or 3 days without use
- activation of permanent run for thermal disinfection for 3.5 or 11 min
- mixing device with hot water stop-valve
- adjustable
- flow limiter 6 l/min
- flexible connection hoses
- non return valve
- dirt strainers
- CE approved
- type of protection faucet IP 59K
- type of protection plug transformer IP 44
- noise classification I in accordance with DIN 4109
- GROHE Water Saving - Less water, perfect flow
- GROHE Long-Life finish

## 36 015 000 EUROPLUS E INFRA-RED ELECTRONIC BASIN MIXER 1/2"



### SPARE PARTS, June 2008 – now

- 1: Screws (Order-nr. 4283100M)
- 2: Mousseur (Order-nr. 42832000)
- 3: Solenoid valve (Order-nr. 43066000)
- 3.1: Dirt strainer (Order-nr. 42798000)
- 4: Sealing washer (Order-nr. 4283600M)
- 5: Cleaning clip (Order-nr. 42837000)
- 6: Mixer spindle with lever (Order-nr. 42839000)
- 6.1: Mixing lever (Order-nr. 42838000)
- 6.2: Sealing washer (Order-nr. 4284000M)
- 7: Fixing set (Order-nr. 42841000)
- 8: Non-return valve (Order-nr. 43431000)
- 9: Plug transformer (Order-nr. 43016000)
- 10: Flexible connection hose, 470 (Order-nr. 45484000)
- 11: Sticker with pictograph (Order-nr. 4217700M)
- 12: Disassembling key (Order-nr. 19132000)\*
- 13: Infra-red remote control (Order-nr. 36206000)\*
- 14: Mousseur (Order-nr. 36133000)\*
- 15: Socket (Order-nr. 36210000)\*
- 16: Rotation lock (Order-nr. 42919000)\*
- 17: Hidden mixing device (Order-nr. 36209000)\*
- 18: Extension cable (Order-nr. 36221000)\*
- 19: Extension cable (Order-nr. 36222000)\*

\*Special accessories