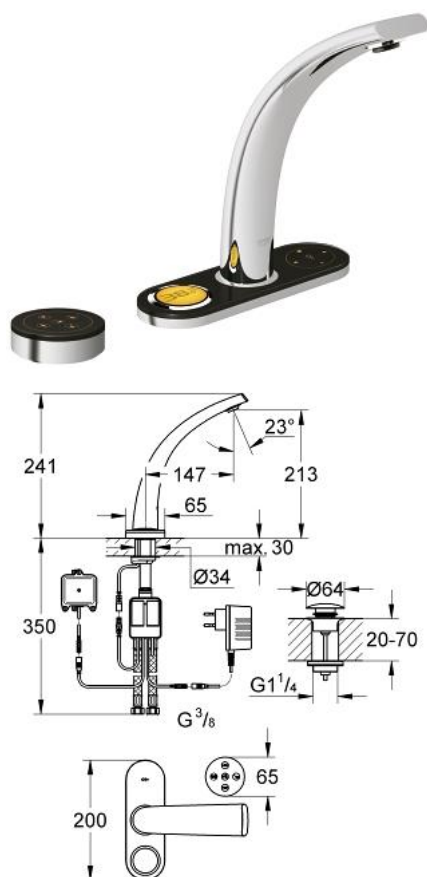


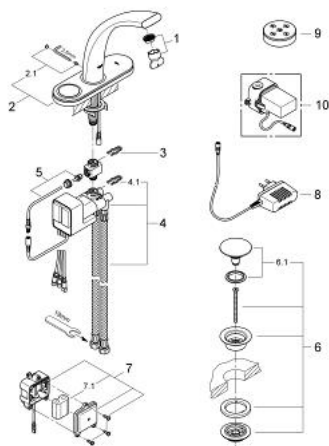
36 082 000 GROHE ONDUS DIGITAL BASIN MIXER



PRODUCT DESCRIPTION

- Colour: chrome
- with display and pre set panel
- single hole installation
- advanced touch operating panel with backlit icons
- integrated digital display and intuitive menu navigation
- wireless sensual touch pre-set panel
- with long life 3V lithium battery CR-2032
- 2 personalized pre set programs
- 3 personalized pre set programs for face rinse, hand wash and teeth brushing
- function unit
- integrated temperature sensor
- plug power supply 230 V AC / 6 V DC
- integrated battery back up
- 6 V lithium battery, type CR-P2
- battery status indicator on display
- integrated mousseur
- push-open waste set 1 1/4"
- flexible connection hoses
- digital flow limiter
- programmable, automatic safety shut-off (with default setting)
- CE approved
- type of protection:
- faucet IP 66
- plug power supply IP 40
- battery unit IP 66
- operating panel IP 69K
- pre set panel IP 57
- to be used with
- 36 078 000

36 082 000 GROHE ONDUS DIGITAL BASIN MIXER



SPARE PARTS, May 2008 – now

- 1: Mousseur (Order-nr. 48009000)
- 2: Operating panel (Order-nr. 45989KS0)
- 2.1: Fixing set (Order-nr. 48003000)
- 3: Fixing clamp (Order-nr. 6554100M)
- 4: Mixing device (Order-nr. 45990000)
- 4.1: Fixing clamp (Order-nr. 6554100M)
- 5: Temperature sensor (Order-nr. 42349000)
- 6: Waste set with push-open plug (Order-nr. 65807000)
- 6.1: Nipple (Order-nr. 45986000)
- 7: Battery housing (Order-nr. 42741000)
- 7.1: Battery (Order-nr. 42886000)
- 8: Plug power supply 230 V (Order-nr. 65790000)
- 9: Pre set panel (Order-nr. 45983KS0)
- 10: Plug power supply 110-240 V (Order-nr. 36078000)*

*Special accessories