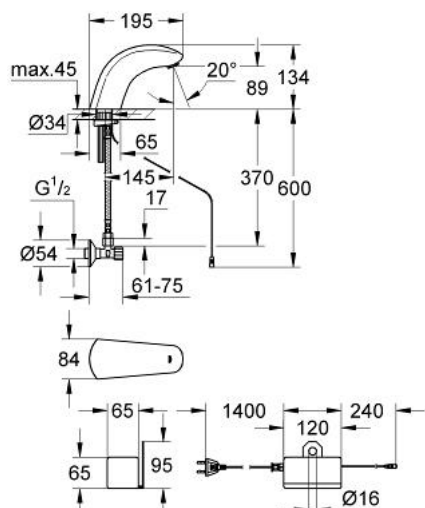


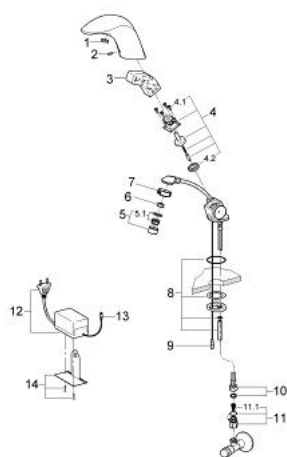
36 149 000 PULSOMAT SURF RADAR ELECTRONIC BASIN TAP 1/2" WITHOUT MIXING DEVICE



PRODUCT DESCRIPTION

- Colour: chrome
- single hole installation
- power supply 24 V
- CE approved
- solenoid valve
- flow limiter 6 l/min
- flexible connection hose
- dirt strainer
- flow limiter
- 1 angle valve
- power supply unit with flat plug connection acc. to European standards
- power supply 230 V, 50 Hz, 9 VA
- operating voltage 24 V
- type of protection IP 44
- GROHE Long-Life finish

36 149 000 PULSOMAT SURF RADAR ELECTRONIC BASIN TAP 1/2" WITHOUT MIXING DEVICE



SPARE PARTS, February 2004 – now

- 1: Cover cap (Order-nr. 43411000)
- 2: Screw (Order-nr. 43093000)
- 3: Electronic (Order-nr. 43673000)
- 4: Magnetic coil (Order-nr. 43635000)
- 4.1: Screws (Order-nr. 4308600M)
- 4.2: Membrane (Order-nr. 43737000)
- 5: Mousseur (Order-nr. 13929000)
- 5.1: Replacement flow control M22x1 and M24x1 (Order-nr. 45002000)
- 6: Flow limiter (Order-nr. 43284000)
- 7: Threaded ring (Order-nr. 43297000)
- 8: Fixing set (Order-nr. 43039000)
- 9: Cable (Order-nr. 43698000)
- 10: Hose cold (Order-nr. 43372000)
- 11: Dirt strainer (Order-nr. 43293000)
- 11.1: Dirt strainer (Order-nr. 4329100M)
- 12: Power supply (Order-nr. 43676000)
- 13: Power supply line (Order-nr. 43700000)
- 14: Support panel (Order-nr. 43184000)