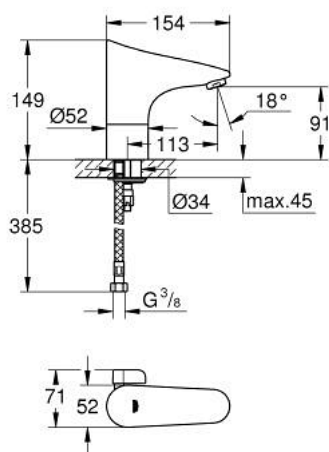


36 207 001 EUROPLUS E INFRA-RED ELECTRONIC BASIN MIXER 1/2" WITH MIXING DEVICE AND ADJUSTABLE TEMPERATURE LIMITER



PRODUCT DESCRIPTION

- Colour: chrome
- with infrared sensor for bi-directional communication for monitoring, configuration and servicing
- 6 V lithium battery, type CR-P2
- battery lifetime: approx. 7 years (150 actuations a day)
- GROHE Water Saving - Less water, perfect flow
- maximum flow rate (at 3 bar): 5 l/min
- flexible connection hoses
- non-return valve
- dirt strainers
- solenoid valve
- rapid installation system
- multistage battery status display
- 7 pre-set programs:
 - auto flush
 - thermal disinfection
 - cleaning mode
- additional functions and precise settings by remote control 36 407
- CE approved
- noise classification I in accordance with DIN 4109
- type of protection faucet IP 59K

36 207 001 EUROPLUS E INFRA-RED ELECTRONIC BASIN MIXER 1/2" WITH MIXING DEVICE AND ADJUSTABLE TEMPERATURE LIMITER



SPARE PARTS, June 2016 – now

- 1: Screws (Order-nr. 4283100M)
- 2: Mousseur (Order-nr. 48159000)
- 3: Battery (Order-nr. 42886000)
- 4: Solenoid valve (Order-nr. 42229000)
- 4.1: Dirt strainer (Order-nr. 42798000)
- 5: Sealing washer (Order-nr. 4283600M)
- 6: Mixer spindle with lever (Order-nr. 42839000)
- 6.1: Mixing lever (Order-nr. 42838000)
- 6.2: Sealing washer (Order-nr. 4284000M)
- 7: Fixing set (Order-nr. 42841000)
- 8: Filter (Order-nr. 4241300M)
- 9: Remote control (Order-nr. 36407001)*
- 10: Hidden mixing device (Order-nr. 36209000)*
- 11: Mousseur (Order-nr. 36133000)*
- 12: Socket (Order-nr. 36210000)*
- 13: Mounting wrench (Order-nr. 19017000)*

*Special accessories