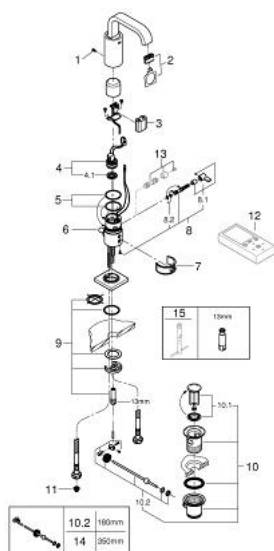


36 234 000 ALLURE E INFRA-RED ELECTRONIC BASIN MIXER 1/2" WITH MIXING DEVICE, ADJUSTABLE TEMPERATURE LIMITER AND WASTE SET

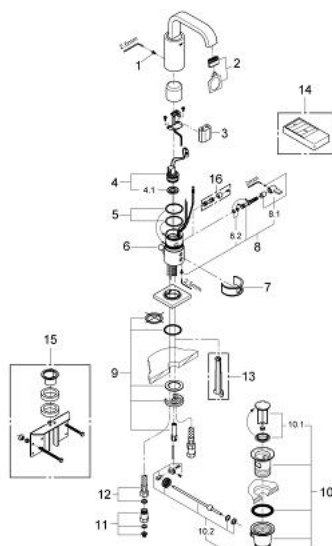


SPARE PARTS, June 2016 – now

- 1: Screws (Order-nr. 4283100M)
- 2: Mousseur (Order-nr. 13220000)
- 3: Battery (Order-nr. 42886000)
- 4: Solenoid valve (Order-nr. 42229000)
- 4.1: Dirt strainer (Order-nr. 42798000)
- 5: Sealing washer (Order-nr. 4283600M)
- 6: Pop-up rod (Order-nr. 42707000)
- 7: Cleaning clip (Order-nr. 42837000)
- 8: Mixer spindle with lever (Order-nr. 42363000)
- 8.1: Mixing lever (Order-nr. 42364000)
- 8.2: Sealing washer (Order-nr. 4284000M)
- 9: Fixing set (Order-nr. 42841000)
- 10: Waste set 1 1/4" (Order-nr. 28910000)
- 10.1: Plug (Order-nr. 07182000)
- 10.2: Eccentric rod (Order-nr. 07052000)
- 11: Filter (Order-nr. 4241300M)
- 12: Remote control for all GROHE infra-red products (Order-nr. 36407000)*
- 13: Hidden mixing device (Order-nr. 36209000)*
- 14: Eccentric rod (Order-nr. 07341000)*
- 15: Mounting wrench (Order-nr. 19017000)*

*Special accessories

36 234 000 ALLURE E INFRA-RED ELECTRONIC BASIN MIXER 1/2" WITH MIXING DEVICE, ADJUSTABLE TEMPERATURE LIMITER AND WASTE SET



SPARE PARTS, February 2009 – June 2016

- 1: Screws (Order-nr. 4283100M)
- 2: Mousseur (Order-nr. 13220000)
- 3: Battery (Order-nr. 42886000)
- 4: Solenoid valve (Order-nr. 42229000)
- 4.1: Dirt strainer (Order-nr. 42798000)
- 5: Sealing washer (Order-nr. 4283600M)
- 6: Pop-up rod (Order-nr. 42707000)
- 7: Cleaning clip (Order-nr. 42837000)
- 8: Mixer spindle with lever (Order-nr. 42363000)
- 8.1: Mixing lever (Order-nr. 42364000)
- 8.2: Sealing washer (Order-nr. 4284000M)
- 9: Fixing set (Order-nr. 42841000)
- 10: Waste set 1 1/4" (Order-nr. 28910000)
- 10.1: Plug (Order-nr. 07182000)
- 10.2: Eccentric rod (Order-nr. 07052000)
- 11: Non-return valve (Order-nr. 43431000)
- 12: Flexible connection hose, 470 (Order-nr. 45484000)
- 13: Disassembling key (Order-nr. 19132000)*
- 14: Infra-red remote control (Order-nr. 36206000)*
- 15: Rotation lock (Order-nr. 42919000)*
- 16: Hidden mixing device (Order-nr. 36209000)*

*Special accessories